

---

**HISTORIC BUILDING SURVEY OF  
UPPER KING, UPPER MEETING STREET  
AND INTERSECTING SIDE STREETS  
CHARLESTON, SOUTH CAROLINA**



**Figure 1.** Bird's Eye of Upper King and Meeting Streets

*Prepared by:*  
HPCP 290  
Maymester 2009  
The College of Charleston  
Charleston, South Carolina 29401

**MAY 2009**

---

## ❖ ACKNOWLEDGMENTS

Six students at the College of Charleston Historic Preservation & Community Planning Program put the following historic building survey and report for Upper King and Meeting Streets as part of a class project in May 2009 for the City of Charleston Department of Planning, Preservation & Economic Innovation. The main points of contact were Debbi Hopkins, Senior Preservation Planner for the City of Charleston and Dr. Barry Stiefel, Visiting Assistant Professor for the College of Charleston and Clemson University. Dr. Stiefel served as the Project Manager for the historic building survey and was assisted by Meagan Baco, MSHP, from the joint College of Charleston-Clemson University Graduate Historic Preservation Program, who served as Graduate Student Instructor and Principle Investigator. Ms. Baco's Master's Thesis, *One-way to Two-way Street Conversions as a Preservation and Downtown Revitalization Tool: The Case Study of Upper King Street, Charleston, South Carolina*, focused on the revitalization of the Upper King Street area. However, this survey project and report would not have been possible without the students that did the overwhelming majority of the work and they are Cashmere Fons, Timnah Geller, Robert (Blair) Harris, Rachel Maher, Kenneth Sprague, and Sarah Vonesh. The following is the report they compiled together from their survey.

## ❖ STUDY AREA



---

**❖ TABLE OF CONTENTS**

INTRODUCTION.....1

METHODOLOGY.....1

BRIEF HISTORY OF UPPER KING STREET..... 2

BRIEF HISTORY OF MEETING STREET ..... 11

BRIEF HISTORY SIDE STREETS ..... 12

FINDINGS ..... 13

CONCLUSION..... 14

REFERENCES ..... 15

APPENDIX A: HISTORICAL MAPS ..... 16

APPENDIX B: SELECTED PHOTOGRAPHS..... 20

APPENDIX C: SURVEYS..... 36

---

## ❖ INTRODUCTION

The areas surveyed include King Street, Meeting Street, and all the connecting side streets, spanning from Calhoun Street to the US17 overpass. The Upper King and Meeting Streets area have long been a center for downtown Charleston's commercial businesses. Following the conversion of Upper King Street from a one-way street to a two-way street in 1994, the Upper King Street area has been significantly revitalized, calling for an update of inventory. The last comprehensive report of the City of Charleston was done in 1974, and a partial report in 1985. In an effort to keep the inventory of Charleston's historic properties updated, a survey of upper King and Meeting Streets that documents approximately 218 parcels is the focus of this report.

## ❖ METHODOLOGY

This historic resources survey of Upper King Street and Upper Meeting Street was conducted in an attempt to identify and evaluate historic properties within the specific area. It is this team's hope that, this formation will assist future preservation activity which will inevitably occur throughout the area as it is revitalized. The survey of Upper King Street was undertaken by College of Charleston students, under the direction of Dr. Barry Stiefel, in a manner that would ensure accuracy of evaluation and consistency within the final product. Tasks involved included planning, fieldwork, development of site inventories, research, data organization, and final preparation of the survey report.

The planning process established the project goals and means for deciding what resources will be recorded by the proposed survey. As suggested by the City of Charleston, the study area of King and Meeting Streets was bounded by the Crosstown, which acts as the northern boundary, and continued south terminating at the intersection of Calhoun Street. The survey extended to all side streets intersecting King and Meeting Streets. During the planning process it was decided that the surveyors, in three teams of two, would focus on particular geographic sections of the study area. The fieldwork was performed by dividing the responsibilities into two categories, with one team-member completing the survey form and one visually documenting the resources with a digital camera.

After conducting the mentioned fieldwork, the teams then compiled their individual information into the development of a comprehensive site inventory. The survey form used was provided by the South Carolina State Historic Preservation Office.

After completing the survey forms from field notes, research was undertaken regarding the history of the individual historic resources. Research focused on the gathering of historical and architectural information pertinent to the conducted survey through various primary and secondary sources. Consulted sources included property deeds, public GIS records available through the county, historic photographs and maps, and other previously documented records.

Once all the data gathered through research and meticulous fieldwork was collected, it was formatted into a spreadsheet to facilitate later use, specifically GIS. This ensures that the final product will be represented in a user-friendly format that can effectively assist later users.

## ❖ BRIEF HISTORY OF UPPER KING STREET<sup>1</sup>

The district known as Upper King Street is bounded by Calhoun Street to the south and US17 to the north. Historically and today, the major commercial corridor of Charleston, South Carolina is King Street, a north-south street that begins at the southern tip of the city continuing northwards for several miles. Like the city in general, the buildings along King Street are typically the oldest at its southern end decreasing in age as one travels north.

There have been two major periods of development along Upper King Street; 1860-1880 and 1940-1950. The area of King Street north of Calhoun Street, which is today's demarcation of Lower and Upper King Street, was an upper-class neighborhood that developed in the 1800s as several suburban villas such as the Aiken-Rhett House, the William Aiken House, and the Joseph Manigault House.<sup>2</sup> As cotton planters entered the city by wagon from the north, merchants developed retail outlets along their route, then called Broad Path. Economic stability and gain was second only to survival for early Charlestonians, and the merchants of the town were looked to for leadership.<sup>3</sup> By the mid-nineteenth century King Street up to Line Street, several blocks north of Boundary Street, was largely developed leading some researchers to pinpoint 1860-1880 as one peak of development in the area.<sup>4</sup>

For the most part, prosperity continued for the area as the second high-point for development along Upper King Street has been identified as 1940-1950. Perhaps one of the most relevant characteristics of the area at this time is the strong presence of Charleston's Jewish community.<sup>5</sup> The contributions of the Jewish community in the area have significance to the communal, commercial and cultural health of the district. A majority of businesses in the Upper King Street district were owned and operated by Jewish Charlestonians in the early twentieth century. This concentration was both spurred and supported by the dense Jewish neighborhood in the area that contained several religious and community institutions; including Brith Sholom Synagogue (68 St. Philip Street, 1874); Beth Israel Synagogue (145 St. Philip Street, 1911); Brith Sholom Beth Israel (182 Rutledge Avenue, 1948); Jewish Community Center (Corner of St. Philip and George Streets, 1945).

---

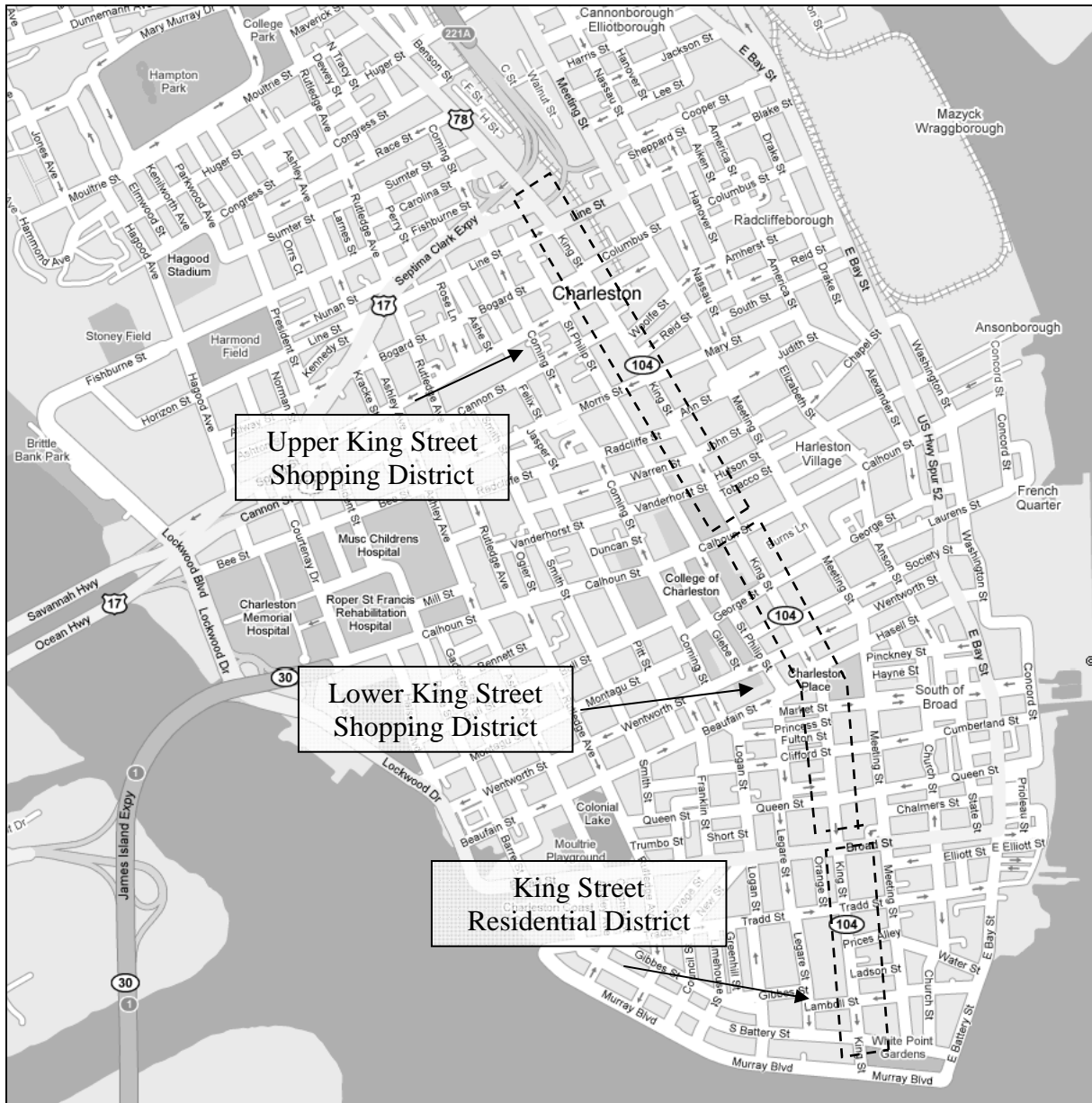
<sup>1</sup> The entirety of the research conducted for historical information on Upper King Street was previously completed as part of a Master's Thesis in Historic Preservation by Meagan Baco for Clemson University and College of Charleston. An electronic version of this thesis is available through the Clemson University library.

<sup>2</sup> Post, Buckley, Schuh & Jernigan, Inc., *National Trust Design Quality Panel: Uptown District, Charleston, South Carolina*, (Charleston, SC: 1985)

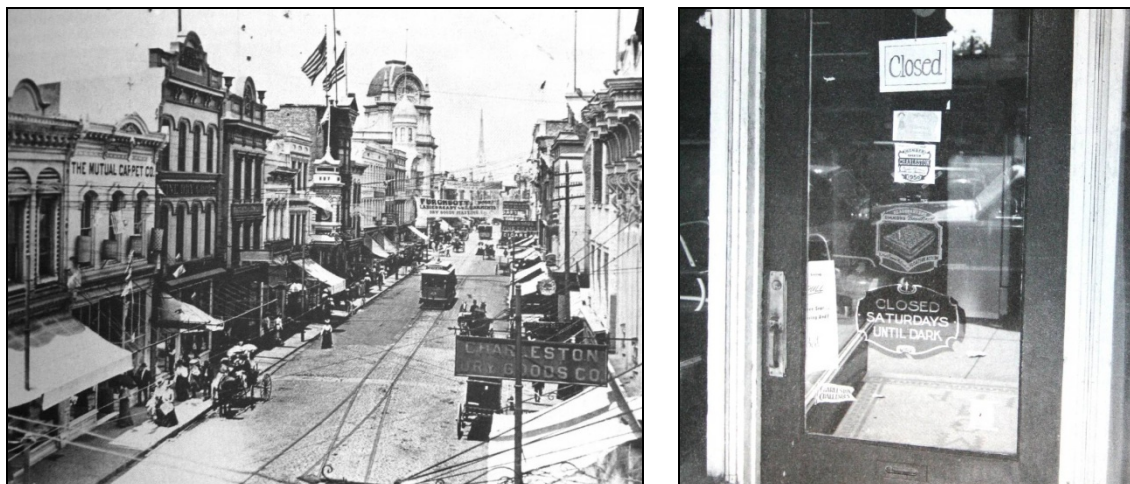
<sup>3</sup> Stuart Owen Stumpf, "Merchants of Colonial Charleston, 1680-1756" (Ph.D. diss., Michigan State University, 1971), 69.

<sup>4</sup> Stockton, *King Street: City Preservationists Think of it as Priceless but for Others it's an Economic Cul-De-Sac*; Post, Buckley, Schuh & Jernigan, Inc., *National Trust Design Quality Panel: Uptown District, Charleston, South Carolina*.

<sup>5</sup> *ibid.*



**Figure 2.** Map of Charleston South Carolina. King Street begins at Murray Boulevard at the southern tip of the peninsula and continues northward. At Line Street, King Street becomes King Street Extension. The area of Upper King Street is demarked by the uppermost dashed rectangle. Its northern boundary is Spring Street and its southern boundary is Calhoun Street.



**Figure 3 (Left)** . View looking north from Wentworth Street onto a busy Lower King Street in 1905. From *Charleston: An Album of the Collection of the Charleston Museum*, 1997, pg 35

**Figure 4 (Right)**. Many Jewish merchants on Upper King Street closed their storefronts for religious observances and holidays. From *Orthodoxy in Charleston*, 2004, pg 25.

At the tail-end of the area's second economic peak (1940-1950), Charleston's government officials, commissioned urban planners and traffic engineers and approved a litany of planning documents. The majority of plans that dealt with King Street identified the weakness of the street in terms of automobile capacity; few mentioned the street's historic or architectural significance. Because of the then-contemporary views that King Street was out-dated and slow, the plans, several of which are outlined below, were detrimental to the street life, business vitality and historic architecture of Charleston's most recognizable street. The plans of the era systematically degraded the corridor's character and vitality.

In attempting to manage congestion, the new profession of transportation engineering promoted the idea of eliminating automobile traffic and therefore the problem of congestion.<sup>6</sup> One-way grids were a commonly employed method by traffic engineers that were intended to decrease congestion while increasing the street's capacity and increasing vehicular speed.<sup>7</sup> One of the first one-way traffic plans for downtown Charleston was commissioned by Mayor William Morrison in 1949 from a traffic engineering consulting firm from Columbia, South Carolina, known as Smith-Dibble & Company.<sup>8</sup> In total, the plan recommended directional changes on 22 of Charleston's existing streets. The plan called for the reversal of traffic on King Street; it would operate one-way northbound from Tradd Street, located just south of Broad Street, to Line Street. North of Line Street, two-way traffic would be allowed.

<sup>6</sup> It is important to note that the traffic would have typically been diverted to other streets, or in many cases to newly created city highways; traffic bans in this time period were not an attempt to limit automobile traffic in the whole city.

<sup>7</sup> In an article in May of 1947, a discussion of turning Cannon and Spring Streets into a one-way couplet was published. Cannon Street would act as the entrance to the city, while Spring Street would function as an exit. "City to Try to Make Cannon and Spring One-way Streets," *Charleston News and Courier*, 17 May 1947, sec. A, p. 1.

<sup>8</sup> "Traffic Survey Recommends Network of One-Way Streets," *News and Courier*, 21 January 1949, sec. A, p. 1.

Based on the support of Mayor Morrison and a unanimous vote by the Traffic Committee, starting on September 5, 1950, the one-way network plan was officially completed and opened to traffic. Following tradition, “historic King Street was the main attraction of the Labor Day pleasure riders” but something was different, as “several commented on the ‘odd sensation’ of traveling northward in the traditionally one-way south thoroughfare.”<sup>9</sup> Others observing King Street operation more intently noticed “traffic moved noticeably faster.”<sup>10</sup> One consequence of the increased speed as indicated in the meeting and the published article was a decrease in local business caused by what was called a “hazardous condition for people to shop.”<sup>11</sup> Furthermore, nonresident sales were also down because “tourists were continuing on through Charleston rather than to shop because the plan was too confusing.” George Birlant of George C. Birlant & Company, a glass and ceramic merchant, succinctly stated his observations in saying, “King Street is a racetrack.”

### *Accommodating an Ever Increasing Traffic Level & Combating Suburbanization*

In the years 1930 to 1955, the urban population of Charleston increased from 62,000 to 70,000 while the population of the suburban areas grew from 21,000 to 91,000.<sup>12</sup> In South Carolina and elsewhere in America, car ownership continued to increase, persuading the federal government to improve and extend existing roadways. This allowed more families to purchase vehicles, which increased their mobility and therefore, their options for living and shopping. Because of the geographic restrictions of peninsular Charleston, many families chose to settle in the city’s suburbs in this time.

In order to facilitate better automobile traffic from the suburbs and encourage economic connectivity in the central city, Chief Highway Commissioner Claude R. McMillan proposed the building of “a throughway across Charleston from the Ashley to the Copper River so as to properly convey U.S. 17 traffic through the city.” Also proposed was the extension of Interstate 26 “all the way into the city to make a “T” connection with U.S. 17.”<sup>13</sup> These new highways would connect the Port of Charleston to Columbia, Greenville, and other cities in the region, including Charlotte, North Carolina and Savannah, Georgia (*Figure 4.7*). The dual overpasses of U.S. 17 are the northern boundaries of the study area for this survey, and to a larger degree act as the boundary for the City of Charleston, as well.

### *Decline of Downtown Charleston’s Minor Commercial District*

In the early 1960s, the City of Charleston and Charleston County commissioned several property surveys, this time focusing on urban land uses. A 1965 project was funded by a grant from the Urban Renewal Administration of Housing and Home Finance Agency and completed by Candeub, Fleissig, Adley & Associates. The plan sought to define the existing pattern of development, detail the existing population, and project a land use, economic and traffic plan for

<sup>9</sup> “New One-Way Traffic Plan is off to Good Start Here,” *Charleston News and Courier*, 5 September 1950, sec. A, p. 1.

<sup>10</sup> *ibid.*

<sup>11</sup> “Retailers Say Traffic Plan is Hurting Business,” *News and Courier*, 12 September 1950, sec. A, p. 1.

<sup>12</sup> Charleston County Planning Board, Charleston City Council, *How Shall We Grow?* (Charleston, SC., 1956), 58.

<sup>13</sup> W.D. Workman Jr., “Solution Possible for Traffic Woes,” *Charleston News and Courier*, 10 Aug, 1958, sec. A, p. 4.

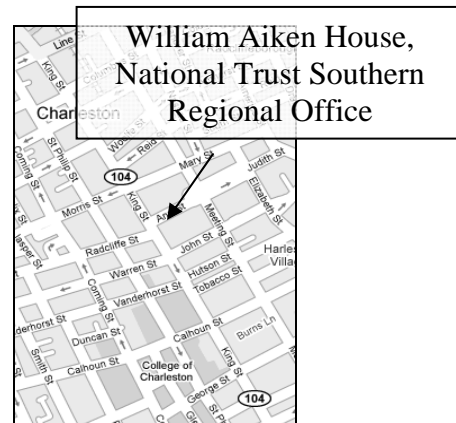


the needs of 1985, while also suggesting public improvements. Development trends were summarized by the following statements, “extensive population dispersion flowing from the center,” “commercial dispersion is becoming more noticeable” and “the heart of the region- the older portion of the city is losing population and has traffic and housing problems...”<sup>14</sup>

In terms of the city’s retail corridor, the density of retail establishments in the Charleston central business district decreased from the 1950s to the 1960s. In fact, there were 1,111 stores in the district in 1954, but 986 in 1958, and only 916 in 1963.<sup>15</sup> Of the 84 acres of “concentrated retail and service facilities” the report said: “the business area is relatively inaccessible from the outlying districts and is served by limited off-street parking facilities. Traffic circulation within the area is also difficult.”<sup>16</sup> This Charleston County report clearly describes the decrease in popularity, density, and regional importance of the central area of Charleston. Because the historic city was not capable of accommodating the new desires of residents, spoiled by the slow pace and open space of the suburban Lowcountry, the city suffered. Downtown businesses were hard to access causing a loss of business density, which caused further deterioration of the district’s physical appearance and its image.

### *Preservation Efforts*

The poor condition of businesses along Upper King Street affected the physical stability and appearance of many of its historic storefronts. The declining Upper King Street was targeted by preservationists in the city as an area deserving of their attention in the 1970s, and by 1977 the National Trust’s Southern Regional Office was located in the William Aiken House at 456 King Street.



**Figure 5.** Photograph of William Aiken House c. 1969, location of the National Trust Southern Regional Office starting in 1977. From the Historic American Building Survey collection at the Library on Congress, HABS SC, 10-CHAR, 54-1

**Figure 6.** Map of Upper King Street indicating the location of the National Trust Southern Regional Office at 456 King Street, within the Upper King Street district.

<sup>14</sup> Candeub, Fleissig, Adley and Associates, *Charleston County, South Carolina: Urban Land Analysis* (Charleston, SC: Charleston County Planning Board, 1965), 21.

<sup>15</sup> Fleissig & Associates Candeub, *General Development Plan, City of Charleston, South Carolina*, (Charleston, SC: City of Charleston, 1966), A3.

<sup>16</sup> Candeub, Fleissig, Adley and Associates, *Charleston County, South Carolina: Urban Land Analysis*, 27.

A preservation plan was completed for the City of Charleston in 1974 by City Planning & Architecture Associates of Chapel Hill, North Carolina, along with Russell Wright of Barrington, Rhode Island, Carl Feiss of Gainesville, Florida and National Heritage Corporation from West Chester, Pennsylvania. This plan revisited previous plans, created an architectural survey of 2,500 historical structures based on their current condition, and recommended action. Among the most important recommendations made about Charleston's downtown by the study's authors was the need to preserve the vistas created by the narrow tree-lined streets of the residential areas and the high-walled storefronts of commercial areas. These characteristics were "visually and emotionally stimulating."<sup>17</sup> With new interest in the area by preservationists, Upper King Street benefited. Their attention to the physical structures brought a new perspective to the area, demanding its physical preservation, and in turn, requiring investment in the business's the structures housed.

The Upper King Street revitalization project gained a major supporter with the election of Mayor Joseph Riley in 1975. In his first mayoral campaign, Riley "promised to reverse the flow of business from downtown Charleston to the suburban shopping malls by revitalizing the central business district. To do this he planned to attract more tourists for longer periods of time..."<sup>18</sup> With a new interest in King Street under Mayor Riley, the City of Charleston began to expand and improve early efforts along Upper King Street within the context of the historic city. Also, under the direction of Mayor Riley, the City used just under \$50,000 to fund the rebuilding of Bluestein's clothing store at 494 King Street. After an accidental fire in October 1987, the 1913 building was left gutted from the inside. In defending his spending, Mayor Riley, stated that rebuilding was essential because "that area [Upper King Street] will one day be a prime and much more commercial area. The Bluestein creates a special renewal statement."<sup>19</sup>



**Figure 7.** Photograph of Bluestein's clothing store at 494 King Street, c. 1973. From Scrapbook of Charleston, SC Architecture Inventory. Available at South Carolina Room, Charleston County Public Library, Charleston, SC.

**Figure 8.** Photograph of Bluestein's clothing store at 494 King Street the day after an accidental fire left the building gutted. From "Case of King Street Fire a Mystery," *Charleston Saturday Post*, 3 October 1987, sec. A, p. 1.

<sup>17</sup> City Planning & Architecture Associates, Russell Wright, Carl Feiss, National Heritage Corporation, *Historic Preservation Plan, Charleston, South Carolina* (Charleston, SC: City of Charleston, 1974).

<sup>18</sup> Fraser Jr., *Charleston! Charleston! The History of a Southern City*, 430.

<sup>19</sup> Kerri Morgan, "Chas. City Council Agrees to Help Rebuild Upper King Street Building," *Charleston News and Courier*, 8 June 1988, sec. B, p. 1.

### *Effect of Hurricane Hugo*

On September 21, 1989, Hurricane Hugo struck Charleston. The effects of the water and wind were detrimental to many of the city's finest historic buildings. Many of the building on Upper King Street, especially those already showing signs of structural instability and deterioration, were damaged severely. The scene created by the storm has been vividly described as, "Along Charleston's King Street glass store fronts exploded. Macabrely twisted mannequins spilled into the sidewalks. Fire erupted from natural gas leaks and water poured through the streets as the tide neared its crest."<sup>20</sup> Even after months of clean up, stabilization and restoration, the damage incurred by the disaster would be evident for decades to come.

Based on the City of Charleston Directories, the Upper King Street vacancy rate in 1981 was 11 percent. This reflects the poor condition of the shopping district and the inability of businesses to stay open, while demand for the area also declined. Hurricane Hugo damaged many of these vacant buildings, already abandoned and undervalued. Even without the increase in demolitions, Hurricane Hugo may have been responsible for the closing of many storefronts along Upper King Street. In 1981, the vacancy rate was eleven percent. In 1990, 40 percent of all Upper King Street storefronts were vacant. For some the hurricane damage may have been an excuse to finally close an unsuccessful business.



**Figure 9.** Picture taken from Condon's Department Store on Warren Street looking north along Upper King Street. From *News and Courier*, "Up and Coming King," 19 November 1990.

<sup>20</sup> Fraser Jr., *Charleston! Charleston! The History of a Southern City*, 440.

---

### *Upper King Street Revitalization*

With increased awareness and investment available after the disaster of Hurricane Hugo, the businesses of Upper King Street took hold of an opportunity to further improve their commercial corridor. The major document guiding the revitalization of Upper King Street in the 1990s was a retail strategy and implementation program drafted by ZHA, Inc., Greenburg Development Services, Hollander, Cohan & McBride and the Institute of Public Affairs and Policy Studies at the College of Charleston.

Before offering implementation strategies, ZHA recorded important observations of the current conditions of Upper King Street. Of the many vacant buildings on King Street, 60 percent were in the Upper district.<sup>21</sup> Furthermore, ZHA estimated that one fourth of first floor square footage in the area was vacant. When the buildings were functioning, they catered primarily to “low- to moderate-income minority residents.” Residents of the area were identified as the major demographic of shoppers, while visitors made up the least compared to the other King Street sub-districts.

While the condition report illustrated the poor physical condition of Upper King, ZHA also indicated that the area suffered for its appearance more than it deserved. The area was rundown, but not as badly as public perception would have one think. Because of this, ZHA included both an advertising and education budget to combat the negative image of Upper King Street. Suggested physical improvements included the renovation of the Francis Marion Hotel, not only as a functioning business, but also as an attractive link between the Middle King sub-district and the Upper sub-district. Streetscape improvements and incentives for building maintenance were also suggested. The recommendations were as much about actual physical improvements as fighting the perceived image of Upper King Street.

Long term plans for the area were focused on attracting a certain type of retail and/or entertainment venue. Because Upper King had historically been recognized for its cluster of furniture stores, the area had the potential to become a regional center for furnishings, home decorating, and other design goods. If a restaurant was to be opened, it should be ethnic; if a theatre should open, independent movies would be best. This re-branding of the area coined Upper King Street as the “funky district.”

With a clear goal for the area, new studies offered specific projects to reach that goal. The City of Charleston gave attention to the idea of significantly altering traffic patterns in downtown in September 1993. Wilbur Smith Associates, successor to the Smith-Dibble & Associates firm responsible for the city’s one-way plan in the 1950s, was commissioned to complete the study.<sup>22</sup> While they reported and took into consideration several physical improvements to the area, they indicated the importance of two-way traffic to the area’s continued success. “It is expected that improvements in traffic circulation, streetscape and parking will be the catalyst necessary to

---

<sup>21</sup> ZHA, Inc. et al. *King and Meeting Street Area: Retail Strategy & Implementation Program* (Charleston, SC, 1992).

<sup>22</sup> Robert Behre, "City Studies 2-Way Traffic on King Street," *Charleston Post and Courier*, 16 September 1993, sec. B, p. 1.

---

bring about further redevelopment.”<sup>23</sup> The Wilbur Smith plan was approved by City Council in January 1994.<sup>24</sup> On November 17, 1994, upper King Street from Line Street south to Calhoun Street was converted to two-way traffic.

While they prefaced their statements by saying it was “too early to tell,” several long-time King Street merchants reported positive results from the traffic pattern change in December 1994. Joe Sokol, owner of Morris Sokol furniture store, stated, “business has been better than it’s been in quite a few years.”<sup>25</sup> Sensing the potential of Upper King Street, several buildings received renovations, acquired totally new occupants, and benefited from other examples of increased investment in the area. An explosion of property sales and grand openings characterized the time after the conversion.

The district has been in existence for approximately 200 years and has experienced the majority of national social, economic and transportation trends in America. In contemporary history, specifically the second half of the twentieth century, Upper King Street changed drastically from a successful Jewish retail corridor, to a depressed inner-city arterial, and has reemerged as a “funky” two-way street. Because of the historic nature of the street and its diverse uses and clientele, the area benefited from the slower paced, more vibrant street-life. The street’s usage as a one-way arterial thoroughfare was declared a failed experiment and merchants welcomed the return of congestion.<sup>26</sup>

---

<sup>23</sup> *ibid.*, 23.

<sup>24</sup> R. Behre, “Two-Way Traffic on King is Studied,” *Charleston Post and Courier*, 26 Jan 1994, sec. B, p. 3.

<sup>25</sup> Laura Willoughby, “King Street Draws Mixed Reviews,” *Charleston Post and Courier*, 8 Dec 1994.

<sup>26</sup> Robert Behre, “Upper King Traffic Two-Way,” *Charleston Post and Courier*, 17 Nov 1994, sec. B, p. 1.

## ❖ BRIEF HISTORY OF MEETING STREET

Meeting Street is one of the most historic and still one of the most used streets in Charleston, South Carolina. It runs 3.5 miles from South Battery Street at the southern tip of the Charleston peninsula and merges with Morris Drive at its most northern and inland point. Meeting Street was originally called Church Street but was most commonly referred to as the “great street that leadeth past the Meeting House.” The “White Meeting House” that gave this street its present name was built in 1685 by the Presbyterians or “Independents”. This later became the Circular Congregational Church.<sup>27</sup>



**Figure 10.** View of Meeting Street near the public market, looking South towards St. Michael's. Note the substantial Charleston Hotel (demolished) and the high-street wall created by commercial storefronts.

The street has a varied history, but has always been a significant street, as it along with Broad Street hosts the “Four Corners of Law”, and today is perhaps the most commonly used street to enter the city from suburbs to the north. In terms of use, the southern strip of Meeting Street between South Battery Street and Broad Street is primarily a historic residential area. North of Broad Street, Meeting Street becomes a commercial tourist area filled mostly with restaurants as well as shops. North of Calhoun Street, however, Meeting Street becomes less cohesive and is occupied by historic villas, railroad warehouses, several churches, but also, public services like the federal building, a medical clinic and some public housing.

In the 1980s, as the city made efforts to reduce crime and rehabilitate the city, the first houses to be boarded up were 404, 406, and 415 Meeting Street to fight the effects of “demolition by neglect”. Charleston government officials decided to take over these properties to try to save the historic housing. They believed it was for the best of the city to board up these houses and wait for better resources to restore them instead of demolishing Charleston's history.<sup>28</sup> In 2004, the revitalization of Upper Meeting Street was done in an effort to help stimulate the economy in this area. This 14.25 million dollar effort between Sheppard and Romney included the widening of sidewalks, three bus turnouts, off peak parking spots, as well as direct access ramps to Mount

<sup>27</sup> News and Courier 8-12-29 CVF Streets - Meeting Street – undated-1979

<sup>28</sup> News and Courier Evening Post 2-17-1980

Pleasant and I-26.<sup>29</sup> The establishment of the US17 highway in the area, and then the recent reconfiguration has severely damaged the neighborhoods near North Meeting Street, in terms of housing stock, connectivity and general aesthetics.

There have been some efforts to integrate the entire length of Meeting Street into a thoroughfare appropriate for visitors, titling it the “Museum Mile” due to the abundance of museums along the street. Meeting Street has been noted the most historically and architecturally significant street in Charleston with King Street being the second. More than 12 buildings on the west side of Meeting between Market and Hasell Streets have been distinguished by national preservation officials as best representing the commercial styles of each of the periods from which they date. Meeting Street has received national attention from preservation officials who are attracted to this line of Greek Revival and Victorian facades.<sup>30</sup>

## ❖ BRIEF HISTORY SIDE STREETS

Many of the side streets connecting King and Meeting Street were named after family members of prominent social figures of Charleston. The Wragg family, being the most prominent in the naming of this area has taken the names for Ann, John, and Mary Street. Reid Street was named after James Reid.<sup>31</sup> Tobacco Street is a little known historic street, which runs through Marion Square. It was closed to traffic in 1862 and in 1882 sidewalk was laid and the remainder of street was added to the parade ground. Columbus Street is the center for most of Charleston rail and water transportation.

### *Spring Street & Cannon Street*

The one-way couplet of Spring Street and Cannon Street has been the cross-town route between King Street and the Ashley River and a one-way east for most of the late half of the 1900’s. Spring Street was designated as the Martin Luther King Memorial Drive in the 1960s celebrating the strong cultural heritage materialized in the district, historically the African-American business corridor. Today, the area retains much of its historic buildings, with some very new infill projects that seem to the appropriate in both use and style. It is probable that the one-way couplet created by these streets will be disbanded and both, Spring and Cannon Streets will operate as two-way in the near future.

### *Mary & Henrietta Streets*

In 1997, Mary Street was closed for 9 months for a drainage project, which upset many of the areas businesses after not being reimbursed for lost income. Improper renovations made at 3 Henrietta were called to the attention of the BAR at the end of the 20<sup>th</sup> century. The construction of the Mendel Rivers Federal Building on Meeting Street with its parking areas accessible from Henrietta obliterated many of the addresses on the south side of the street.<sup>32</sup>

<sup>29</sup> Jessica, Vanegeren. "Meeting Street to dress up in new, brighter wardrobe." The Post & Courier [Charleston] 28 Feb. 2004

<sup>30</sup> News and Courier 6-9-1969

<sup>31</sup> Charleston Streets: A-K

<sup>32</sup> Charleston Streets: L-Z

---

### *Ann Street*

In the early part of the century Ann Street was the center of Charleston's Southern railroad complex including an engine house and freight sheds. This one block street has now become the Charleston Visitor Center complex. The Camden freight sheds historically were used for loading goods on and off of trains but now have other civic, cultural and commercial uses and the street has become part of the William Aiken National Historic Landmark District.

### *Hutson Street*

Located directly behind the Old Citadel, Hutson Street, has historically served commercial and industrial purposes. The buildings surviving from its earliest uses, include several simple brick warehouses utilized by the Charleston Bagging Factory, City of Charleston Police Department, the South Carolina Railroad and Sears & Roebuck. Today the majority of buildings are vacant, but are adjacent to several emerging restaurants.

### *Calhoun Street*

Calhoun Street was named for John C. Calhoun. This street has long been the demarcation of Upper King Street and Upper Meeting Street, from their more historic southern segments. It used to be lined with tracks and overhead wires for trolleys but were removed in 1934. Now Calhoun Street along with Spring Street are the two major streets crossing the peninsula from East Bay Street to Lockwood. Besides its purpose as a major thoroughfare, the street is also host to Marion Square, a parade ground turned well-utilized Public Park for the City of Charleston.<sup>33</sup>

## ❖ FINDINGS

Based on our statistical analysis of Upper King Street, Meeting Street, and side streets we have observed 218 individual parcels of which 185 are buildings. Roughly 38% were built by frame method and 31 percent by masonry.

### *Current Use*

The primary use of this area is commercial including restaurants, retail, and architecture firms. The secondary use of this area is residential mostly apartments located on the second floor above storefronts. About 2 percent are churches, 51 percent are commercial buildings, 13 percent are mixed use, 2 percent are multi-dwelling, and less than 1% are museums, parks, construction zones, and offices. About 7 percent of our parcels were vacant lots, most of which were located north of Ann Street.

---

<sup>33</sup> Charleston Streets: A-K



---

### *Date of Construction*

The significance of a building is often given by its construction date and style. However, it is difficult to determine the buildings' actual date of construction due to the fact that the majority of these buildings have new facades. It is important to note that the dates given for most of these buildings are based on what is visible from the street. At least 85 buildings are believed to be over 50 years old making them eligible for the National Register 57 of which are over 100 years old.

### ❖ **CONCLUSION**

This survey presents a snap shot of the fabric of Upper King Street. Many of the vacant lots contain remnants of historic buildings which can be seen by remaining mosaic doorways as well as historic foundations. The current uses of the majority of these buildings is the same as their historic uses. Upper King Street and Meeting Street remain mainly commercial and residential. The side streets between two main through ways have historically been influenced by the transportation uses of the railroad as well as the port. Now these influences are still apparent in the architecture of these industrial warehouse areas. In an effort to revitalize Upper Meeting Street much of its historical integrity was compromised. Although each building individually may not be historically significant they add to the fabric of the city and must be preserved in order to maintain the historical integrity of the area. Many of these buildings meet one or more of the criteria required to become part of the National Register and should be preserved for the future of the city.

---

## ❖ REFERENCES

Charleston County Planning Board and Charleston City Council. *How Shall We Grow?* (Charleston, SC:, 1956).

Charleston Streets: A-K (available at the South Carolina Room in the Charleston County Public Library: Main Branch.)

Charleston Streets: L-Z (available at the South Carolina Room in the Charleston County Public Library: Main Branch.)

Candeub, Fleissig, Adley and Associates. *Charleston County, South Carolina: Urban Land Analysis*. (Charleston, SC: Charleston County Planning Board, 1965).

Candeub, Fleissig and. Associates. *General Development Plan, City of Charleston, South Carolina*. (Charleston, SC: City of Charleston, 1966).

City Planning & Architecture Associates, Russell Wright, Carl Feiss, National Heritage Corporation. *Historic Preservation Plan, Charleston, South Carolina* (Charleston, SC: City of Charleston, 1974).

Fraser Jr., Walter. *Charleston! Charleston! The History of a Southern City*. (Columbia, SC: University of South Carolina Press, 1991).

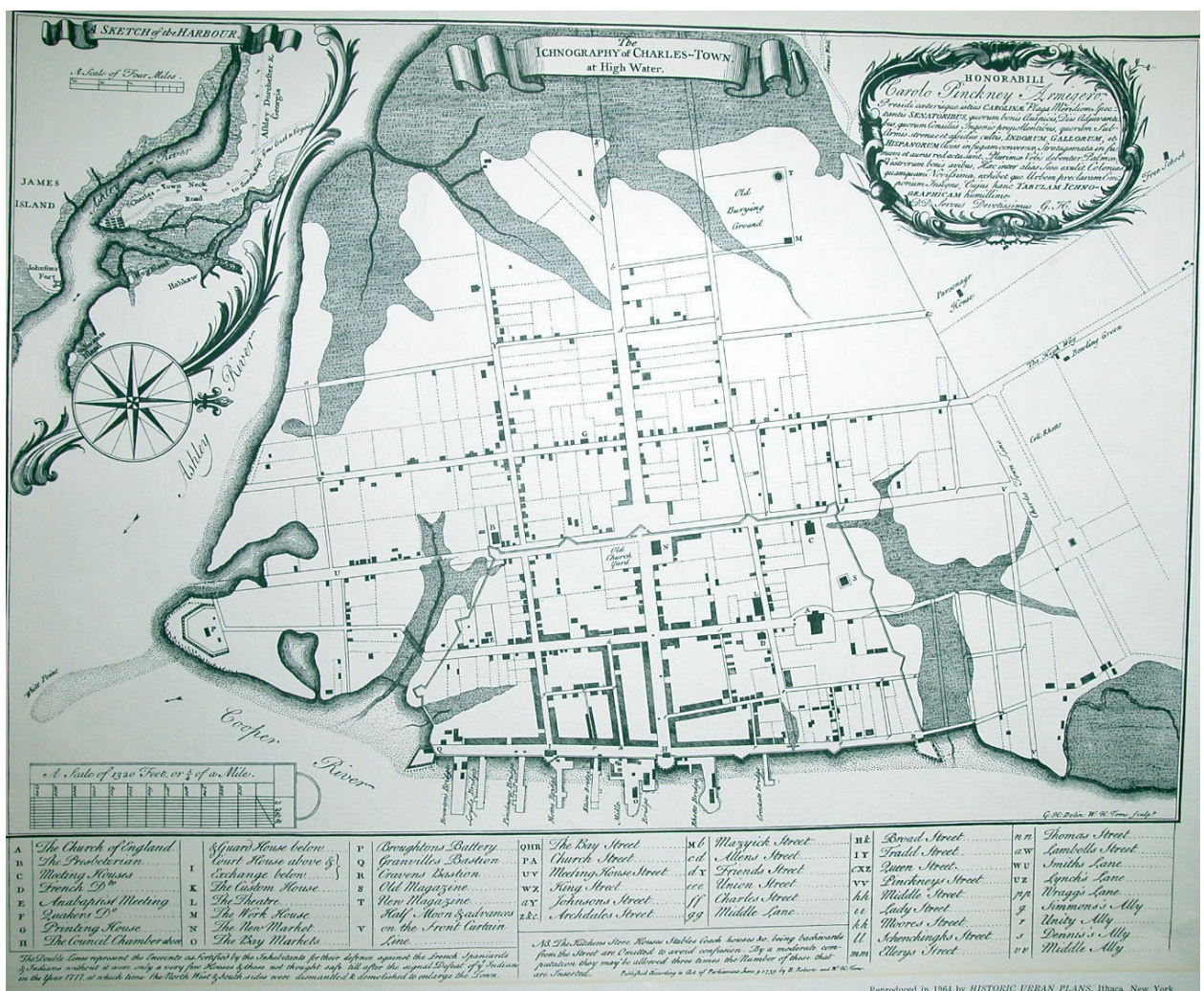
Post, Buckley, Schuh & Jernigan, Inc. *National Trust Design Quality Panel: Uptown District, Charleston, South Carolina*. (Charleston, SC: 1985).

Poston, Jonathan. *The Buildings of Charleston*. (Columbia, SC: University of South Carolina Press, 1997).

Stumpf, Stuart Owen. *Merchants of Colonial Charleston, 1680-1756*. (Ph.D. diss., Michigan State University, 1971).

ZHA, Inc. et al.. *King and Meeting Street Area: Retail Strategy & Implementation Program*. (Charleston, SC, 1992).

❖ **APPENDIX A: HISTORICAL MAPS**



A	The Church of England	I	Guard House below	P	Broughtons Battery	QH	The Bay Street	M	Maryck Street	h	Bowd Street	n	Thomas Street
B	The Protestant	J	Court House above &	Q	Granvilles Bastion	PA	Church Street	d	Allens Street	IX	Fradell Street	w	Smiths Lane
C	Meeting Houses	K	Exchange below	R	Craevens Bastion	UV	Meeting House Street	x	Fronts Street	XI	Queen Street	v	Squibs Lane
D	French St	L	The Customs House	S	Old Magazine	W	King Street	xx	Arson Street	VII	Pinckneys Street	z	Wraggs Lane
E	Anabaptist Meeting	M	The Store	T	New Magazine	xy	Johnsons Street	xxi	Charles Street	xxv	Middle Street	p	Swannons Alley
F	Quakers St	N	The Work House	V	King, Alons & Cadwells	yz	Archdales Street	xxii	Middle Lane	vii	Lady Street	q	Swanns Alley
G	Drinking House	O	The New Market		on the Front Curtain	zz		xxiii		h	Moors Street	r	Watts Alley
H	The Council Chamber		The Bay Markets		Lane			xxiv		II	Shonchings Street	s	Dennis Alley
								xxv		m	Morgys Street	v	Middle Alley

*All The Windows Stone Houses & Stables Cook houses &c. being built towards from the Street are omitted to avoid confusion. By a moderate comparison they may be observed there denotes the direction of these that were destroyed.*

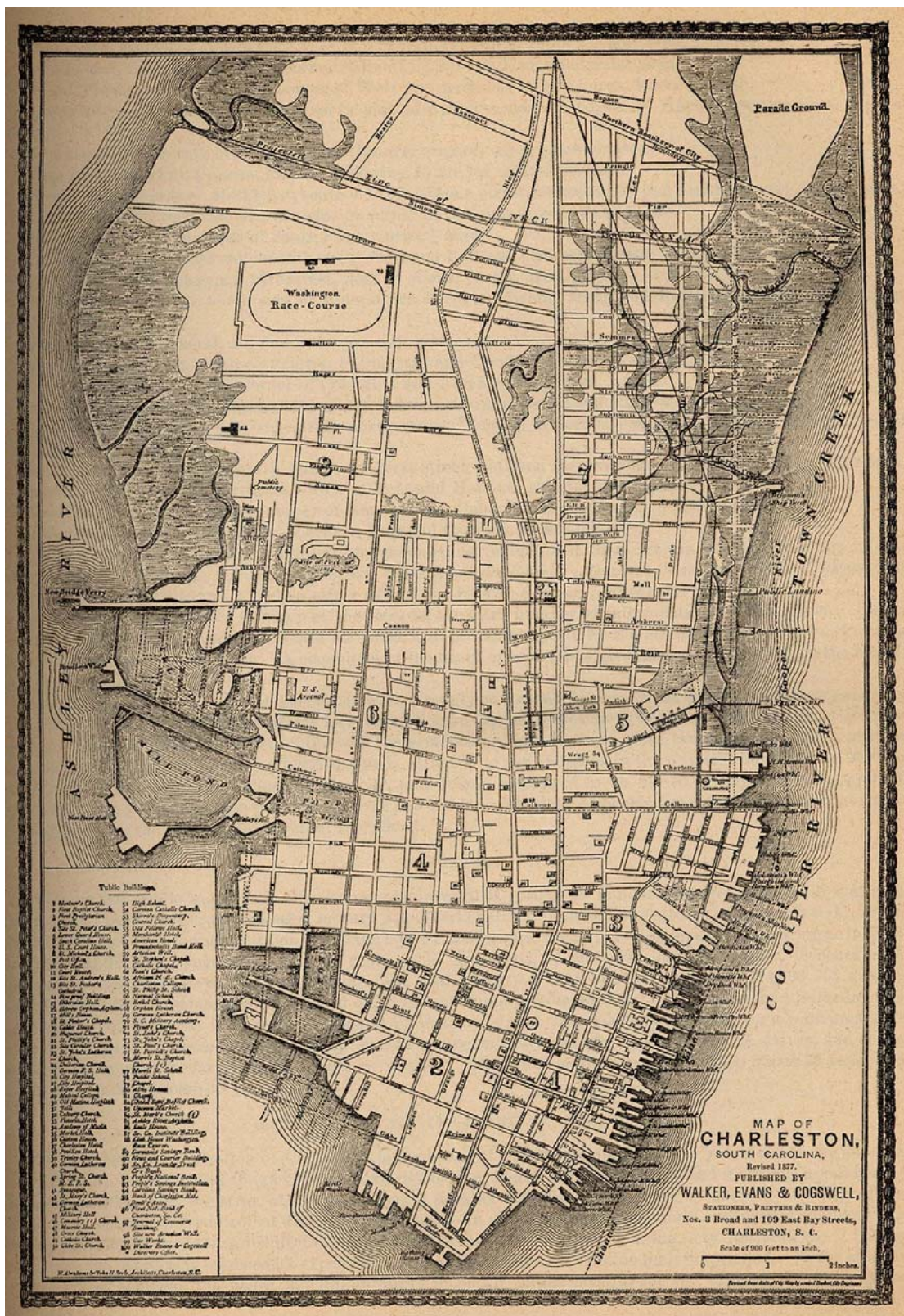
Printed according to Act of Parliament June 9 1732 by B. Roberts and W. C. Green.

Reproduced in 1964 by HISTORIC URBAN PLANS, Ithaca, New York.

Ichnography map of Charleston, South Carolina: 1739



Ichonography of Charleston, South Carolina: 1788



Map of Charleston, South Carolina: 1877

❖ **APPENDIX B: SELECTED PHOTOGRAPHS**



Highway 17 sign on Upper King Street





Streetscape: Upper King Street near Line & King Streets



Streetscape: Upper King Street near Cannon and King Streets



Alley adjacent to 39 John Street



Streetscape: Upper King Street near Cannon and King



Streets

430 King Street, on the corner of King and John Streets



Street  
scape: near the corner of Vanderhorst and King Streets



420 King Street: Blue Bicycle Books



412 King Street: Charleston School of Law, formerly Chase Furniture





Streetscape: Upper King Street, near Spring and King Streets



495 King Street: Leon's





Streetscape: Upper King Street near Warren and King

Streets



Streetscape: Upper King Street near King and Vanderhorst Streets



345 Meeting Street: The Visitor's Center

❖ **APPENDIX C: SURVEYS**

	A	B	C	D	E	F
1	Parcel Number	Address/Location	Common Name	Historic Name	City/County	Vicinity of
2	0	372 Calhoun Street		Sears	Charleston/Charleston	
3	0	329 Meeting Street	Marion Square		Charleston/Charleston	
4	0	435 & 437 King Street	Pita King, King Street Grocery	Condon's	Charleston/Charleston	
5	0	423 King Street	Charleston Area Convention & Visitors Bureau		Charleston/Charleston	
6	0	637 King St	MBM Tax Servicer	N/A	Charleston/Charleston	
7	0	Corner of Line and King			Charleston/Charleston	
8	4570402022	145 Calhoun St	Mama Kims		Charleston/Charleston	Marion Square
9	4570402022	145 A and B Calhoun Street			Charleston/Charleston	Near King Street and Marion Square
10	4570402023	379-381 King St GIS 381	Moe's	Enston Building	Charleston/Charleston	
11	4570402060	143 Calhoun Street	Artists and Craftsman Supply		Charleston/Charleston	Marion Square
12	4570402060	143 Calhoun Street	Knights of Columbus		Charleston/Charleston	Marion Square
13	4570402061	141 Calhoun Street	Landris Salon		Charleston/Charleston	Marion Square
14	4570402062	139 Calhoun Street	Trio Club		Charleston/Charleston	Marion Square
15	4570402063	137 Calhoun Street	Alluette's Jazz Café		Charleston/Charleston	Marion Square
16	4570402064	135 Calhoun Street	Charleston Imaging Products		Charleston/Charleston	Marion Square
17	4570402075	133 Calhoun Street	Charleston Physical Plant		Charleston/Charleston	Marion Square
18	4580101033	125 Calhoun Street	Holiday Inn Hotel		Charleston/Charleston	Marion Square
19	4590503066	460 Meeting Street	Kordonis Grocery		Charleston/Charleston	Meeting st and Columbus St
20	4590503071	476 A Meeting Street	Jackson Hewitt		Charleston/Charleston	Meeting St and Line St
21	4590503071	476 B Meeting Street	Blades Professional Barbering		Charleston/Charleston	Meeting st and Line st
22	4590503071	476 D Meeting Street	Old Central		Charleston/Charleston	Meeting St and Line St
23	4590503071	476 E Meeting Street	Charleston Trident Urban League, Inc.		Charleston/Charleston	Meeting St and Line St
24	4590503072	478 Meeting Street	Family Dollar		Charleston/Charleston	Meeting St and Line St.
25	4590503073	492 Meeting Street	Church's Chicken		Charleston/Charleston	Line Street



	G	H	I	J	K	L	M	N	O
1	Ownership	Category	Historical Use	Current Use	Number Vacant	SHPO National Register Determination		Construction Date	Amount over 100 years old
2	Private	Building	Commercial	Commercial	0	Within Old and Historic District of Charleston	Within Old and Historic District of Charleston		0
3	Private	Building	Park	Park	0	Within Old and Historic District of Charleston	Within Old and Historic District of Charleston		0
4	Private	Building	commercial	Mix Use	0	Not Eligible		Contemporary	0
5	State	Building		other	0	Not Eligible		Contemporary	0
6	Private	building	Commercial	Commercial	0	Contributes to eligible district			0
7					0				0
8	Unknown/Other	Building	Commercial	Commercial	0	Contributes to Listed District			0
9	Unknown/Other	Building	Commercial	Vacant, Commercial	1	Contributes to Old and Historic Local District			0
10	Private	building	multi dwelling, commercial	Commercial	0	Eligible		c. 1860	1
11	Private	Building	Commercial	Commercial	0	Contributes to Listed District			0
12	Unknown/Other	Building	Other	Other	0	Contributes to Listed District		1907	1
13	Unknown/Other	Building	Commercial	Commercial	0	Contributes to Listed District		1907	1
14	private	Building	Commercial	Commercial	0	Contributes to Listed District		1940-present	0
15	Private	Building	Commercial	Commercial	0	Contributes to Listed District		1860-1900	1
16	Unknown/Other	Building	Commercial	Commercial	0	Contributes to Listed District			0
17	State	Building	Other	Other	0	Contributes to Listed District			0
18	Private	Building	Commercial	Commercial	0	non-contributing		2000	0
19	Unknown/Other	Building	Multi-dwelling	Commercial	0	Potentially Eligible			0
20	Corporate	Building	Commercial	Commercial	0	Not Eligible		1940-present	0
21	Private	Building	Other	Commercial	0	Not Eligible		1940-present	0
22	Unknown/Other	Building	Commercial	Commercial	0	Not Eligible		1940-present	0
23	Corporate	Building	Commercial	Commercial	0	Not Eligible		1940-present	0
24	Corporate	Building	other	Commercial	0	Not Eligible		1940-present	0
25	Private	Building	Commercial	Commercial	0	Not Eligible	Within Old and Historic District of Charleston		0

	P	Q	R	S	T	U	V	W	X	Y	Z
1	Alteration Date	Commercial Form	Stories	Construction Method	Amount Frame	Historic Core Shape	Exterior Walls	Roof Materials	Roof Shape	Porch Width	Porch Shape
2					0	Rectangular			Flat		
3					0	Rectangular			Flat		
4			5	Steel	0	Rectangular	Brick, Brick Veneer		Flat		
5			1	Steel & Masonry	0	Rectangular	Stucco, Brick Veneer		Flat		
6			2	Masonry	0	Rectangle	Concrete block, bick veneer		flat	none	
7					0						
8		resturaunt	2	Frame	1	Rectangular	Stucco, Brick	Unknown	Flat		
9			2	Frame	1	Rectangular	Stucco, Brick	Unknown	Flat		
10	1940, 1980		3	Brick	0	rectangle	stucco		flat		
11			3	Frame	1	Rectangular	Brick	Unknown	Flat		
12	1947		3	Frame	1	Rectangular	Brick	Unknown	Flat		
13			1	Frame	1	Square	Stucco	Unknown	Flat		
14			2	Frame	1	Rectangular	Stone Veneer	Unknown	Flat		
15			2	Frame	1	Rectangular	Stucco		Gabled		
16			1.5	Frame	1	Rectangular	Stone Veneer	Unknown	Flat		
17			2	Frame	1	Rectangular	Brick				
18		hotel	6	Steel	0	Rectangular	Stucco, Other	Unknown	Flat	Colonnade	Rusticated Stucco
19		Grocery Store	2	Frame	1	Rectangular	Weatherboard	Red Turned Metal	Front Gabled		
20			1	Frame	1	Rectangular	Stucco	Unknown	Flat		
21		Barber Shop	1	Frame	1	Rectangular	Stucco	Unknown	Flat		
22			1	Frame	1	Rectangular	Stucco	Unknown	Flat		
23			1	Frame	1	Rectangular	Stucco	Unknown	Flat		
24		retail store	1 1/2	Steel	0	Rectangular	Brick Veneer	Green Turned Metal	Flat/ Hipped		
25			1		0	Square	Synthetic Siding	Turned Metal	Flat		

	AA	AB	AC
1	Foundation	Significant Architectual Features	Alterations
2	Slab		
3	Slab		
4	Slab Construction	Post Modern	
5	Slab Construction	commercial storefront	
6	not visible		
7			
8	Not Visible	This Contemporary building has white stucco walls and two large pilasters with marble bases surrounding the storefront.	
9	Not Visible	145 A & B Calhoun Street are located inside of a Contemporary building that has white stucco walls and two large pilasters with marble bases surrounding the storefront.	
10	not visible	Italianate cornice, triangular and rounded window pediments, 2/2 Victorian windows	
11	Not Visible	This Gothic Revival building has pointed arch windows, and gothic crenellations	
12	Not Visible	This Gothic Revival building has pointed arch windows, and gothic crenellations	
13	Not Visible	This building is made of concrete block that are painted grey; it has large storefront windows, and a red awning wrapping around the building.	
14	Not Visible	This Moderne building has a marble veneer; ribbon windows on the second floor, and large storefront windows, covered by an awning, on the first floor.	
15	Not Visible	This Charleston single house from the late Victorian period 2x2 double hung sash windows with pediments, dentils, and decorative brackets.	
16	Not Visible	This is a Moderne storefront attached to a historic single family residence. The storefront is covered with a marble veneer, and it has a cantilevered turned metal roof overhang above the 1st floor.	
17	Not Visible		
18	Basement, Concrete	Post-Modern	
19	Slab Construction	This building, originally a Charleston single house, is composed with beveled board siding, and a red turned metal roof. It has large store front windows on the first floor, and 6x6 double hung sash windows on the second floor.	
20	Slab Construction	This contemporary building has beige stucco walls with white trim; single pane windows, and a false front gabled roof.	
21	Slab Construction	This contemporary building has brown stucco walls, large store front windows, and a flat roof.	
22	Slab Construction	This contemporary building, rectangular in plan has brown, flat stucco walls with a corner entrance.	
23	Slab Construction	This contemporary building, rectangular in plan has brown, flat stucco walls with a corner entrance.	
24	Slab Construction	This contemporary building has a brick veneer exterior, large store front windows, and a green turned metal roof.	
25	Slab		

	AD	AE
1	<b>Architects/Builders</b>	<b>Historical Information</b>
2		
3		
4		
5		
6		
7		
8		
9		
10		
11		
12		
13		
14		
15		
16		
17		
18		Not Historic
19		
20		
21		
22		
23		
24		
25		Franchise

	AF	AG	AH	AI
1	Source of Information	Recorded by	Date Recorded	
2	<a href="http://www.charlestoncounty.org">www.charlestoncounty.org</a>	Ken Sprague and Rachel Maher	05/14/09	
3	<a href="http://www.charlestoncounty.org">www.charlestoncounty.org</a>	Ken Sprague and Rachel Maher	05/14/09	
4		Timnah Geller, Blair Harris		
5		Timnah Geller, Blair Harris	5/14/2009	
6		Timnah Geller, Blair Harris	12-May-09	
7		Timnah Geller, Blair Harris	13-May-09	
8		Sarah Vonesh, Cashmere Fons	5/14/2009	
9		Sarah Vonesh, Cashmere Fons	5/14/2009	
10		Timnah Geller, Blair Harris	5/15/2009	
11		Sarah Vonesh, Cashmere Fons	5/14/2009	
12		Sarah Vonesh, Cashmere Fons	5/14/2009	
13		Sarah Vonesh, Cashmere Fons	5/14/2009	
14		Sarah Vonesh, Cashmere Fons	5/14/2009	
15		Sarah Vonesh, Cashmere Fons	5/14/2009	
16		Sarah Vonesh, Cashmere Fons	5/14/2009	
17		Sarah Vonesh, Cashmere Fons	5/14/2009	
18	Field Survey	Barry Stiefel, Meagan Baco	5/14/2009	
19		Sarah Vonesh, Cashmere Fons	5/15/2009	
20		Sarah Vonesh, Cashmere Fons	5/15/2009	
21		Sarah Vonesh, Cashmere Fons	5/15/2009	
22		Sarah Vonesh, Cashmere Fons	5/15/2009	
23		Sarah Vonesh, Cashmere Fons	5/15/2009	
24		Sarah Vonesh, Cashmere Fons	5/15/2009	
25	<a href="http://www.charlestoncounty.org">www.charlestoncounty.org</a>	Ken Sprague and Rachel Maher	05/15/09	

	A	B	C	D	E	F
26	4590503074	498 Meeting Street	Vacant Storefront	House: Phillip, Rose	Charleston/Charleston	Between Sheppard and Line Street
27	4590503075	502 Meeting Street	House	House	Charleston/Charleston	Between Sheppard and Line Street
28	4590503076	504 Meeting Street	Touch of Jazz		Charleston/Charleston	Sheppard Street
29	4590503077	Meeting Street Site C	Site	Site	Charleston/Charleston	Lee and Meeting Street
30	4590503078	Meeting Street Site B	Site	Site	Charleston/Charleston	Lee and Meeting Street
31	4590503079	Meeting Street Site A	Site	Site	Charleston/Charleston	Lee and Meeting Street
32	4590503081	517 Meeting Street	PSAV		Charleston/Charleston	Lee and Meeting Street
33	4590503093	43 Sheppard Street	House	House	Charleston/Charleston	Meeting and Sheppard Street
34	4590503094	41 Sheppard Street	House	House	Charleston/Charleston	Meeting and Sheppard Street
35	4590503100	495 Meeting Street	House	House: McSweeney, Kelly	Charleston/Charleston	Between Sheppard and Line Street
36	4590503101	493 Meeting Street	Milligan's Hair Center	House: Heyward, James	Charleston/Charleston	Between Sheppard and Line Street
37	4590503102	491 Meeting Street	House	House: Thomas, Snype J.	Charleston/Charleston	Between Sheppard and Line Street
38	4590503103	487 Meeting Street	Anything Marine		Charleston/Charleston	Meeting Street and Line Street
39	4590503104	34 Line Street			Charleston/Charleston	Line Street between King and Meeting
40	4590503105	36 Line Street			Charleston/Charleston	Line and Meeting St
41	4590503106	38 Line Street			Charleston/Charleston	Line Street between King and Meeting
42	4590503108	44 Line Street	AAA Downtown Storage		Charleston/Charleston	Line and King St
43	4590503111	45 Line Street			Charleston/Charleston	Line Street between King and Meeting
44	4590503112	43 Line Street			Charleston/Charleston	Line Street between King and Meeting
45	4590503113	41 Line Street			Charleston/Charleston	Line Street between King and Meeting
46	4590503114	39 A Line Street			Charleston/Charleston	Line Street between King and Meeting
47	4590503114	39 B Line Street			Charleston/Charleston	Line Street between King and Meeting
48	4590503115	35 and 37 Line street			Charleston/Charleston	Line Street between King and Meeting
49	4590503116	33 A Line Street			Charleston/Charleston	Line Street between King and Meeting

	G	H	I	J	K	L	M	N	O
26	Private	Building	Residential	Commercial	0	Not Eligible	Within Old and Historic District of Charleston		0
27	Private	Building	Residential	Residential	0	Not Eligible	Within Old and Historic District of Charleston	c.1872	1
28	Private	Building	Commercial	Commercial	0	Not Eligible	Within Old and Historic District of Charleston		0
29	Private	Site	Site	Site	1				0
30	Private	Site	Site	Site	1				0
31	Private	Site	Site	Site	1				0
32	Private	Building	Commercial	Commercial	0	Not Eligible	Within Old and Historic District of Charleston		0
33	Private	Building	Residential	Vacant	1	Not Eligible	Within Old and Historic District of Charleston	c.1890	1
34	Private	Building	Residential	Vacant	1	Not Eligible	Within Old and Historic District of Charleston	c.1885	1
35	Private	Building	Residential	Residential	0	Potentially Eligible	Within Old and Historic District of Charleston	c.1885	1
36	Private	Building	Mix Use	Commercial	0	Not Eligible	Within Old and Historic District of Charleston	c.1852	1
37	Private	Building	Residential	Residential	0	Potentially Eligible	Within Old and Historic District of Charleston	c.1852	1
38	Unknown/Other	Building	Mixed Use	Vacant, Mixed Use	1	Potentially Eligible			0
39	Private	Building	Single Dwelling	Single Dwelling	0	Contributes to Old and Historic Local District		1852	1
40	Unknown/Other	Site		Vacant Lot	1	Not Eligible			0
41	Private	Building	Single Dwelling	Single Dwelling	0	Contributes to Old and Historic Local District		1885	1
42	Unknown/Other	Building	Commercial	Commercial	0	Contributes to Old and Historic Local District		1900-1930	1
43	Unknown/Other	Site		Vacant Lot	1	Not Eligible			0
44	Unknown/Other	Site		Vacant Lot	1	Not Eligible			0
45	Private	Building	Single Dwelling	Single Dwelling	0	Contributes to Old and Historic Local District		1886	1
46	Private	Building	Single Dwelling	Multi Dwelling	0	Contributes to Old and Historic Local District		1998	0
47	Private	Building	Single Dwelling	Multi Dwelling	0	Contributes to Old and Historic Local District		1998	0
48	Unknown/Other	Site		Vacant Lot	1	Not Eligible			0
49	Private	Building	Single Dwelling	Multi Dwelling	0	Contributes to Old and Historic Local District		1997	0

	P	Q	R	S	T	U	V	W	X	Y	Z
26			2.5		0	Rectangular	Beaded Weatherboard, Brick Veneer, Concrete Block	Shingles	Gable		
27			2		0	Rectangular	Beaded Weatherboard	Shingles	Gable		Enclosed
28			2.5		0	Rectangular	Beaded Weatherboard, Brick, Concrete Block	Shingles	Gable		Enclosed
29					0	L					
30					0	Rectangular					
31					0	Rectangular					
32					0	Irregular			Flat		
33			2		0	Rectangular	Beaded Weatherboard	Turned Metal	Gable		Charleston Single
34			2		0	Rectangular	Beaded Weatherboard	Turned Metal	Gable		Charleston Single
35			2		0	Rectangular	Beaded Weatherboard	Turned Metal	Gable		Charleston Single
36			2		0	Rectangular	Beaded Weatherboard, Stucco	Turned Metal	Gable		Charleston Single
37			2		0	Rectangular	Beaded Weatherboard	Turned Metal	Gable		Charleston Single
38			2 1/2	Frame	1	Rectangular	Weatherboard, Brick Veneer	Red Turned Metal	Front Gabled		Rectangular
39			2	Frame	1	Rectangular	Weatherboard	Asphalt Shingles	Front Gabled		Rectangular
40					0						
41			2	Frame	1	Rectangular	Weatherboard	Turned Metal	Front Gabled		Rectangular
42		Storage Facility		Steel and 2 Masonry	0	Rectangular	Brick	Turned Metal	Hipped		
43					0						
44					0						
45			2	Frame	1	Rectangular	Weatherboard	Asphalt Shingles	Front Gabled		Rectangular
46			2	Frame	1	Rectangular	Weatherboard	Asphalt Shingles	Front Gabled		Rectangular
47			2	Frame	1	Rectangular	Weatherboard	Asphalt Shingles	Front Gabled		Rectangular
48					0						
49			2	Frame	1	Rectangular	Weatherboard	Asphalt Shingles	Front Gabled		Rectangular



	AA	AB	AC
26	Slab		
27	Raised Basement	Enclosed Charleston Single Porch	
28	Slab	Enclosed Charleston Single Porch	
29			
30			
31			
32	Slab		
33	Concrete Block		
34	Concrete Block		
35	Concrete Block		
36	Concrete Block	Stucco Storefront	
37	Concrete Block		
38	Not Visible	This Charleston single house is composed of beveled board walls with a brick corner entrance store front. It has 6x6 double hung sash windows, and a front gabled roof with dormers.	Corner storefront was added to this Charleston single house
39	Stuccoed Masonry	Charleston single house with beveled board wood siding and a front gabled roof	
40			
41	Stuccoed Masonry	Charleston single house with beveled board wood siding, and a front gabled turned metal roof	
42	Not Visible	A two story brick commercial building with single story storage units along both sides, and in the rear. The building has a hipped roof, and brick is laid using a three course common bond.	
43			
44			
45	Stuccoed Masonry	A white Charleston single house with beveled board wood siding, a front gabled roof, and 6x6 and 3x3 double hung sash windows with Charleston green shutters	
46	Stuccoed Masonry	A beige Charleston single house with beveled board wood siding, a front gabled roof, and single pain, double hung windows with Charleston green shutters	
47	Stuccoed Masonry	A beige Charleston single house with beveled board wood siding, a front gabled roof, and single pain, double hung windows with Charleston green shutters	
48			
49	Stuccoed Masonry	A pink Charleston single house with beveled board wood siding, a front gabled roof, and single pain, double hung windows with Charleston green shutters	

	AD	AE
26		2 Story Side Gable House
27		Charleston Single House
28		Charleston Single House
29		
30		
31		
32		
33		Charleston Single House
34		Charleston Single House
35		Charleston Single House
36		Charleston Single House
37		Charleston Single House
38		
39		
40		
41		
42		
43		
44		
45		
46		
47		
48		
49		

	AF	AG	AH	AI
26	<a href="http://www.charlestoncounty.org">www.charlestoncounty.org</a>	Ken Sprague and Rachel Maher	05/15/09	
27	<a href="http://www.charlestoncounty.org">www.charlestoncounty.org</a>	Ken Sprague and Rachel Maher	05/15/09	
28	<a href="http://www.charlestoncounty.org">www.charlestoncounty.org</a>	Ken Sprague and Rachel Maher	05/15/09	
29	<a href="http://www.charlestoncounty.org">www.charlestoncounty.org</a>	Ken Sprague and Rachel Maher	05/15/09	
30	<a href="http://www.charlestoncounty.org">www.charlestoncounty.org</a>	Ken Sprague and Rachel Maher	05/15/09	
31	<a href="http://www.charlestoncounty.org">www.charlestoncounty.org</a>	Ken Sprague and Rachel Maher	05/15/09	
32	<a href="http://www.charlestoncounty.org">www.charlestoncounty.org</a>	Ken Sprague and Rachel Maher	05/15/09	
33	<a href="http://www.charlestoncounty.org">www.charlestoncounty.org</a>	Ken Sprague and Rachel Maher	05/15/09	
34	<a href="http://www.charlestoncounty.org">www.charlestoncounty.org</a>	Ken Sprague and Rachel Maher	05/15/09	
35	<a href="http://www.charlestoncounty.org">www.charlestoncounty.org</a>	Ken Sprague and Rachel Maher	05/15/09	
36	<a href="http://www.charlestoncounty.org">www.charlestoncounty.org</a>	Ken Sprague and Rachel Maher	05/15/09	
37	<a href="http://www.charlestoncounty.org">www.charlestoncounty.org</a>	Ken Sprague and Rachel Maher	05/15/09	
38		Sarah Vonesh, Cashmere Fons	5/15/2009	
39		Sarah Vonesh, Cashmere Fons	5/13/2009	
40		Sarah Vonesh, Cashmere Fons	5/13/2009	
41		Sarah Vonesh, Cashmere Fons	5/13/2009	
42		Sarah Vonesh, Cashmere Fons	5/13/2009	
43		Sarah Vonesh, Cashmere Fons	5/13/2009	
44		Sarah Vonesh, Cashmere Fons	5/13/2009	
45		Sarah Vonesh, Cashmere Fons	5/13/2009	
46		Sarah Vonesh, Cashmere Fons	5/13/2009	
47		Sarah Vonesh, Cashmere Fons	5/13/2009	
48		Sarah Vonesh, Cashmere Fons	5/13/2009	
49		Sarah Vonesh, Cashmere Fons	5/13/2009	

	A	B	C	D	E	F
50	4590503116	33 B Line Street			Charleston/Charleston	Line Street between King and Meeting
51	4590503130	483 Meeting Street	KFC		Charleston/Charleston	Meeting St and Line St.
52	4590503135	474 Meeting St	Star Gospel Mission		Charleston/Charleston	Meeting St and Columbus St
53	4590503135	472 C Meeting Street	Cricket		Charleston/Charleston	Meeting st and Columbus St
54	4590503135	472 D Meeting Street	Pro Nails		Charleston/Charleston	Meeting st and Columbus St
55	4590503135	472 F Meeting Street	Sherwin-Williams		Charleston/Charleston	Meeting St. and Columbus St.
56	4590503135	472 E Meeting Street	Trident Literacy Association		Charleston/Charleston	Meeting st and Columbus St
57	4590503135	472 B Meeting Street	World Finance Group		Charleston/Charleston	Meeting st and Columbus St
58	4590901001	458 Meeting (99 & 101 Columbus as per County GIS)	Simply Fashions Parking Lot		Charleston/Charleston	Lot on corner of Meeting and Columbus Streets
59	4590901010	59 Nassau Street	Wesley United Methodist Church		Charleston/Charleston	Fronts Meeting Street at Spring Street
60	4590901012	51 Nassau Street	Franklin C. Fetter Family Health Care		Charleston/Charleston	
61	4590901012	51 Nassau Street	Franklin C. Fetter Family Health Care		Charleston/Charleston	
62	4590901032	428 Meeting Street	Hot Mustard Chinese Restaurant		Charleston/Charleston	Corner of Meeting and Woolfe Streets
63	4590901032	420 Meeting Street (414-426 Meeting st as listed on GIS)	Exxon Gas Stations		Charleston/Charleston	Corner of Meeting and Woolfe Street
64	4590901033	428.5 Meeting Street	428.5 Meeting Street		Charleston/Charleston	
65	4590901034	430 Meeting Street	Fisher & Walker Law Office, Craig Harris, M.D.		Charleston/Charleston	
66	4590901042	456 Meeting Street	Simply Fashions		Charleston/Charleston	Near corner of Meeting and Columbus streets
67	4590901042	450 Meeting Street	Money Man Pawn		Charleston/Charleston	Between Spring and Columbus Streets
68	4590901042	450 Meeting Street	Money Man Pawn Parking Lot		Charleston/Charleston	
69	4590901045	445 Meeting Street	Piggly Wiggly		Charleston/Charleston	Meeting St and Spring St
70	4590901049	431 Meeting Street			Charleston/Charleston	Meeting st and Woolfe St
71	4590901052	28 Woolfe Street			Charleston/Charleston	Woolfe and Meeting st
72	4590901053	25 Woolfe Street			Charleston/Charleston	Woolfe between King and Meeting
73	4590901053	27 Woolfe Street			Charleston/Charleston	Woolfe between King and Meeting
74	4590901056	417 Meeting St	Costal Carolina Cleaners		Charleston/Charleston	SW Meeting St and Woolfe St

	G	H	I	J	K	L	M	N	O
50	Private	Building	Single Dwelling	Multi Dwelling	0	Contributes to Old and Historic Local District		1997	0
51	Corporate	Building	Commercial	Commercial	0	Not Eligible		1940-present	0
52	Unknown/Other	Building	Commercial	Church	0	Not Eligible		1940-present	0
53	Corporate	Building	Commercial	Commercial	0	Not Eligible		1940-present	0
54	Corporate	Building	Commercial	Commercial	0	Not Eligible		1940-present	0
55	Corporate	Building	Commercial	Commercial	0	Not Eligible		1940-present	0
56	Unknown/Other	Building	Commercial	Other	0	Not Eligible		1940-present	0
57	Corporate	Building	Commercial	Commercial	0	Potentially Eligible			0
58	Private	Site	Commercial	Commercial	0	Not Eligible			0
59	Private	Building	Church	Church	0	Potentially Eligible		1961	0
60	Private	Building	Single Dwelling	Commercial	0				0
61	Private	Building	Single Dwelling	Commercial	0		Within Old and Historic District of Charleston		0
62	Private	Building	Commercial	Commercial	0	Not Eligible			0
63	Private	Building	Commercial	Commercial	0	Not Eligible			0
64	Private	Site		Parking Lot	0		Within Old and Historic District of Charleston		0
65	Private	Building	Single Dwelling	Commercial	0	Within Old and Historic District of Charleston	Within Old and Historic District of Charleston		0
66	Private	Building	Commercial	Commercial	0	Not Eligible		1980	0
67	Private	Building	Commercial	Commercial	0	Not Eligible			0
68	Private	Site	Commercial	Vacant	1		Within Old and Historic District of Charleston		0
69	Corporate	Building	Commercial	Commercial	0	Not Eligible		1940-present	0
70	Unknown/Other	Building	Commercial	Commercial	0	Not Eligible			0
71	Unknown/Other	Building	Commercial	Vacant, commercial	1	Contributes to Old and Historic Local District			0
72	Unknown/Other	Site		Vacant Lot	1	Not Eligible			0
73	Unknown/Other	Site		Vacant Lot	1	Not Eligible			0
74	Private	Building	Commercial	Commercial	0	Contributes to Old and Historic Local District		1920-1940	0

	P	Q	R	S	T	U	V	W	X	Y	Z
50			2	Frame	1	Rectangular	Weatherboard	Asphalt Shingles	Front Gabled		Rectangular
51		Fast Food Restaurant	1	Frame	1	Rectangular	Stucco	Red Turned Metal	Mansard		
52			1	Frame	1	Rectangular	Brick Veneer	Unknown	Flat		
53			1	Frame	1	Rectangular	Stucco	Unknown	Flat		
54			1	Frame	1	Rectangular	Stucco	Unknown	Flat		
55		Retail Store	1	Frame	1	Rectangular	Stucco	Unknown	Flat		
56			1	Frame	1	Rectangular	Stucco	Unknown	Flat		
57			2	Frame	1	Rectangular	Stucco	Turned Metal	Front Gabled		
58					0						
59			2	Masonry	0	Rectangular, Irregular	Brick	Asphalt	Steep Gable		
60			2.5		0	Irregular	Brick Veneer, Stucco		Flat		
61			2.5		0	Irregular	Brick Veneer, Stucco		Flat		
62			1	Masonry	0	Square	Brick	Unknown	Flat		
63		gas station	1	Steel	0	Rectangular	Cast-Stone, Metal Panels	Unknown	Flat		
64					0	Irregular					
65			2.5		0	Rectangular	Beaded Weatherboard, Stucco	Standing-seem tin	Gable	Long Side	Rectangle Piazza
66		retail store	1	Masonry	0	Rectangular	Weatherboard, Concrete Block	Unknown	Flat		
67			2	Masonry	0	L	Stucco, Brick, Concrete Block	Unknown	Flat		
68					0	Irregular					
69		Grocery Store	2 1/2	Frame	1	Rectangular	Brick Veneer	Red Turned Metal	Side Gabled		
70			1	Steel	0	Rectangular	Aluminum Siding	Aluminum	Flat		
71			2	Steel and Masonry	0	Rectangular	Brick	Unknown	Flat		
72					0						
73					0						
74			1	Frame	1	Rectangular	Brick	Unknown	Flat		

	AA	AB	AC
50	Stuccoed Masonry	A pink Charleston single house with beveled board wood siding, a front gabled roof, and single pain, double hung windows with Charleston green shutters	
51	Slab Construction	This contemporary building has white stucco walls with large store front windows, and a red mansard roof.	
52	Slab Construction	This contemporary building has a grey brick veneer; two entrance doors in the front, and a large white cross centered above the two entrances	
53	Slab Construction	This contemporary building has brown stucco walls, large storefront windows, and a flat roof.	
54	Slab Construction	This contemporary building has brown stucco walls, large store front windows, and a flat roof.	
55	Slab Construction	This contemporary building has crème colored stucco walls with brown trim; large store front windows, and a corner entrance.	
56	Slab Construction	This contemporary building has brown stucco walls with crème colored trim; large store front windows, and a false, front gabled roof.	
57	Slab Construction	This is a Charleston single house with large store front windows, surrounded by pilasters on the first floor, and 6x6 double hung sash windows on the second floor. The exterior walls are composed of beveled board.	
58			
59	Slab Construction	Steep gable, Romanesque entrance arch, stained glass windows	Includes parking lot to the south, on map as "011"
60	Slab	Post-Modern	
61	Slab	Post-Modern	
62	Slab Construction	Modern, addresses corner with round entrance	Aluminum windows, painted brick
63	Slab Construction	Modern	
64			
65	Brick, Stuccoed Masonry	Charleston single house, side piazza, 6/6 windows	Sign on front facade
66	Slab Construction	Modern	
67	Slab Construction	Modern	Appears to have been two buildings historically, concrete block additions to rear. Boarded windows, metal bars, aluminum/fabric awning
68			
69	Not Visible	This contemporary building, rectangular in plan, is composed of a brick veneer with large rounded arch windows, and a side gabled roof with a clearstory.	
70	Slab Construction	This temporary structure, rectangular in plan, has aluminum siding, and a flat aluminum roof.	
71	Slab Construction	Industrial building with white painted brick and asbestos siding, and two loading platforms.	
72			
73			
74	Not Visible	This Moderne building is composed of mixed colored roman brick, and has a small blue awning over the front entrance.	

	AD	AE
50		
51		
52		
53		
54		
55		
56		
57		
58		
59	Moses Maxwell, Chairment of church's building committee	Congregation organized in 1873
60		
61		
62		
63		Not Historic
64		Parking lot, not historic
65		Charleston single house
66		Not Historic
67		
68		
69		
70		
71		
72		
73		
74		



	AF	AG	AH	AI
50		Sarah Vonesh, Cashmere Fons	5/13/2009	
51		Sarah Vonesh, Cashmere Fons	5/15/2009	
52		Sarah Vonesh, Cashmere Fons	5/15/2009	
53		Sarah Vonesh, Cashmere Fons	5/15/2009	
54		Sarah Vonesh, Cashmere Fons	5/15/2009	
55		Sarah Vonesh, Cashmere Fons	5/15/2009	
56		Sarah Vonesh, Cashmere Fons	5/15/2009	
57		Sarah Vonesh, Cashmere Fons	5/15/2009	
58		Barry Stiefel and Meagan Baco	5/14/2009	
59	Field Survey and Cornerstone of building	Barry Stiefel and Meagan Baco	5/14/2009	
60		Barry Stiefel and Meagan Baco	05/14/09	
61	<a href="http://www.charlestoncounty.org">www.charlestoncounty.org</a>	Barry Stiefel and Meagan Baco	05/14/09	
62		Barry Stiefel and Meagan Baco	5/14/2009	
63	Field Survey	Barry Stiefel and Meagan Baco	5/14/2009	
64	<a href="http://www.charlestoncounty.org">www.charlestoncounty.org</a>	Barry Stiefel and Meagan Baco	05/14/09	
65	<a href="http://www.charlestoncounty.org">www.charlestoncounty.org</a>	Barry Stiefel and Meagan Baco	05/14/09	
66	Field Survey	Barry Stiefel and Meagan Baco	5/14/2009	
67	Field Survey	Barry Stiefel and Meagan Baco	5/14/2009	
68	<a href="http://www.charlestoncounty.org">www.charlestoncounty.org</a>	Barry Stiefel and Meagan Baco	05/14/09	
69		Sarah Vonesh, Cashmere Fons	5/14/2009	
70		Sarah Vonesh, Cashmere Fons	5/15/2009	
71		Sarah Vonesh, Cashmere Fons	5/13/2009	
72		Sarah Vonesh, Cashmere Fons	5/13/2009	
73		Sarah Vonesh, Cashmere Fons	5/13/2009	
74		Sarah Vonesh, Cashmere Fons	5/15/2009	

	A	B	C	D	E	F
75	4590901057	415 Meeting St	ABC Packaging Store		Charleston/Charleston	Meeting St.
76	4590901057	80 A Reid St	Alluette's Café		Charleston/Charleston	Reid st and Meeting St
77	4590901057	80 B Reid St	Safe Way Food and Supplies		Charleston/Charleston	Reid st and Meeting St
78	4590901069	418 Meeting Street	Proposed- "The Green on Meeting Street"		Charleston/Charleston	Corner of Meeting and Reid streets
79	4590903104	390 Meeting Street	Budget Car Rental	unknown	Charleston/Charleston	Visitors Center, corner of Meeting and Mary streets
80	4590903105	394 & 392 Meeting Street	Charleston School of Law		Charleston/Charleston	Visitors Center
81	4590903106	396 Meeting Street	Enterprise Car Rental		Charleston/Charleston	Visitors Center, Railroad
82	4590903109	404 Meeting Street	"Tract A"		Charleston/Charleston	396 Meeting Street and Reid Street
83	4590903114	411 Meeting St	The Courtyard Apartments		Charleston/Charleston	Meeting st and Mary St
84	4590903117	385 Meeting Street	AT&T Building		Charleston/Charleston	Meeting St and Mary St
85	4590903120	0 Wragg Place	Wragg Mall	Wragg mall	Charleston/Charleston	
86	4590903121	6 Wragg Place	Charleston Progressive Academy or Courtenay School	Courtenay School	Charleston/Charleston	Wragg Mall and Visitors Center
87	4590903147	63 Mary Street	Visitor Center Parking Garage		Charleston/Charleston	Mary Street between King and Meeting streets
88	4591301001	342 Meeting Street	Wragg Square & Second Presbyterian Church	Wragg Square (Ashmead Place) & Second Presbyterian Church	Charleston/Charleston	Marion Square
89	4591301005	350 Meeting Street	Manigault House	Joseph Manigault House	Charleston/Charleston	Marion Square, Visitor's Center, Charleston Museum
90	4591301005	360 Meeting Street	Charleston Museum	Charleston Museum	Charleston/Charleston	
91	4591303001	328 Meeting Street	Citadel Square Baptist Church	Citadel Square Baptist Church	Charleston/Charleston	Marion Square
92	4591303021	320 Meeting Street	Shell Gas Station	BP Gas Station	Charleston/Charleston	Marion Square
93	4591303022	334 Meeting Street	Federal Building	L. Mendel Rivers Federal Building	Charleston/Charleston	Marion Square
94	4591303022	334 Meeting Street	Federal Building	L. Mendel Rivers Federal Building	Charleston/Charleston	Marion Square
95	4600404026	630 King Street	Shine	Old Rabens Tavern	Charleston/Charleston	King and Line St

	G	H	I	J	K	L	M	N	O
75	Private	Building	Commercial	Commercial	0	Contributes to old and historic local district		1920-1940	0
76	Unknown/Other	Building	Commercial	Commercial	0	Not Eligible		1920-1940	0
77	Unknown/Other	Building	Commercial	Commercial	0	Not Eligible		1920-1940	0
78	Private	Site	Commercial	Vacant lot	1	Not Eligible			0
79	Private	Building	Commercial	Commercial	0	Contributes to Old and Historic Local District, 1997			0
80	Private	Building	Other	Other	0	Contributes to Old and Historic Local District		1950-1980	0
81	Private	Building	Commercial	Commercial	0	Eligible/Contributes to Listed District	Within Old and Historic District of Charleston	c.1890-1920	1
82	Private	Site	Commercial	Commercial	0	Not Eligible			0
83	Corporate	Building	Other	Multi Dwelling	0	Not Eligible			0
84	Corporate	Building	Other	Commercial	0	Contributes to old and historic local district			0
85	City	Site	Open	park	0	Eligible	Within Old and Historic District of Charleston	1801	1
86	County	Building	Public School	Public School	0	Contributes to Old and Historic Local District		1955-1957	0
87	State	Structure	Other	Other	0	Contributes to Old and Historic Local District			0
88	Private	Building	Other	Other	0	Contributes to Old and Historic Local District		1811	1
89	Private	Building	Single Dwelling	Museum	0	Contributes to Listed District, National Historic Landmark	Within Old and Historic District of Charleston	1803	1
90	Private	Building	Other	Museum	0	Within Old and Historic District of Charleston	Within Old and Historic District of Charleston		0
91	Private	Building	Church	Church	0	Contributes to Listed District		1844-1856	1
92	Private	Building	Commercial	Commercial	0	Non-Contributing		1990s	0
93	Private	Building	Other	Other	0	Potentially Eligible	Within Old and Historic District of Charleston	1960s	0
94	Private	Building	Other	Other	0	Potentially Eligible		1960s	0
95	Private	Building	Commercial	Commercial	0	Contributes to Listed District	Within Old and Historic District of Charleston	c.1890-1920	1

	P	Q	R	S	T	U	V	W	X	Y	Z
75		Liquor Store	1	Frame	1	Irregular	Stucco	Unknown	Flat		
76			1	Frame	1	Rectangular	Stucco	Unknown	Flat		Rectangular
77			1	Frame	1	Rectangular	Stucco	Unknown	Flat		Rectangular
78					0						
79		car rental	1	Steel	0	Irregular	Concrete, Brick Veneer	Unknown	Flat		
80			2	Frame	1	Rectangular	Concrete, Brick Veneer	Unknown	Flat		
81			2		0	Square	Brick, Concrete		Flat		
82					0	Irregular					
83			3	Frame	1	Irregular	Stucco	Asphalt Shingles	Gabled		
84			3	Steel	0	Rectangular	Stucco, Brick Veneer	Unknown	Flat		
85					0	Rectangular					
86			2	Steel	0	L, Irregular	Brick Veneer, Concrete	Unknown	Flat	Concrete and Brick Colonnade	L-Shape
87		parking garage	5	Steel	0	Rectangular	Stucco, Brick Veneer, Steel	Unknown	Flat		
88	1990-1991		3	Frame	1	Rectangular	Weatherboard	Unknown	Complex Gable	One Bay	Front Portico
89	1980's & 1990's		3		0	Rectangular	Brick	Slate	Complex Hipped	One bay	Semi-Circle, Double-Tiered Piazza
90			3		0	Irregular/Interior Courtyard	Brick, Brick Veneer		Flat		
91	1990-1991		3 + steeple	Masonry	0	irregular	Cast-Stone	Metal	Complex Gable		
92	2009	gas station	1	Steel	0	Rectangular	Metal Panels	Unknown	Flat		
93			7		0	Rectangular	Brick, Marble, Concrete		Flat		
94			7		0	Rectangular	Brick, Marble, Concrete		Flat		
95	2008	Restaurant	3	Frame	1	Square	Brick, Concrete Block, Wood Shingle	Shingle	Gable		

	AA	AB	AC
75	Slab Construction	This Moderne building has white stucco walls with red dots, and a corner entrance	
76	Not Visible	A modern, pink stucco building, rectangular in plan, with a large green awning on the front facade, and a fenced in area, for outdoor seating, located to the left of the principle façade.	
77	Not Visible	A moderne, grey, flat stucco building, rectangular in plan, with a red awning over the front entrance.	
78		Post modern new construction proposed, five stories	
79	Slab Construction	Modern, Metal cornice	
80	Slab Construction	Modern	
81	Slab	"Chicago Commercial" Stepped parapet	Upgrades for utilities, glass blocks/blocked fenestration
82			
83	Not Visible	The Courtyards buildings are composed of pink stucco walls, single pane, double hung windows, and gabled roofs with dormers.	
84	Not Visible	This Contemporary building, rectangular in plan, is composed of brick veneer on the first floor, and pink stucco on the upper floors. The entrance is surrounded by monumental pilasters, and there are large rounded arch windows on the ground floor.	
85		Landscape Architecture	Modern brick paving, benches, light posts and fountain
86	Slab Construction	Modern brutalist	Modern updates for utilities
87	Brick Pier	This contemporary concrete parking structure rests on large brick piers, and it has large metal shutters and grates covering the side.	
88	Not Visible	Federal-Adams, Tuscan portico (front) and Tuscan pediment (rear), spire was never completed has only a rusticated base and octagonal cupola	Interior restoration to improve sound quality (1833), Repairs after Hurricane Hugo, including replicated interior ornament (1989)
89	Basement, Brick	Federal-Adams, Palladian influence, Neo-Classical, Semi-Circular Bays	Restoration in the 1980's, repairs after Hurricane Hugo in the late 1990's
90	Basement		
91	Stone, Slab Construction	Romanesque revival, French influence, elaborate tracery on windows, rose window, victorian steeple	Original 224-foot spire was reconstructed in a shorter victorian style after Hurricane Hugo (1989)
92	Slab Construction	Modern	New pumps and overhang, May 2009
93	Basement	Post-War Modern, Marble, Fenestration said to replicate ratio of historic homes in downtown Charleston (70 Ashley, 21 Legare, 213 King)	
94	Basement	Post-War Modern, Marble, Fenestration said to replicate ratio of historic homes in downtown Charleston (70 Ashley, 21 Legare, 213 King)	
95	Slab	Charleston Single House with corner entrance, 5 Gable Dormers	Sold in 2007 with renovations completed in 2008. Extended Storefront

	AD	AE
75		
76		
77		
78		Proposed mixed use development by "Meeting Street Developers LLC"
79		Not Historic
80		Not Historic
81		Was likely part of the warehouse district created for the RR
82		
83		
84		
85	John Wragg	Land was set aside by John Wragg in 1801, later it was fronted by seven rental properties of William Aiken, owner of current Aiken-Rhett House. Two of these houses remain standing, the others were demolished or moved for Courtenay School
86		First structure pre 1940, expansion in 1940 led to demolition of two houses on Wragg Mall, later the building was replaced with the new school in 1955-1957. The current building is more than 50 years old
87		
88	James & John Gordon	Branch of Scots Church, faces public square, interior restoration too
89	Gabriel Manigault	Home of wealthy planter, commissioned brother, an amateur architect to design house. Stood as suburban villa until 1920;s when it became tenement. Threatened with demolition, purchased and saved by Susan Pringle Frost at the Society for the Preservation of Old Dwellings. Now operated by the Charleston Museum as a house museum
90	Chrissman & Soloman (Boston)	Purposely modern architecture, built as revitalization strategy, hurricane-proof, not yet +50 years old
91	Edward C. Jones, Frances D. Lee	Congregation formed from other local Baptist churches including the oldest Baptist church in the South. Members concerned with reaching residents in upper part of the City of Charleston, structure built on part of Citadel land, known as Citadel Green
92		Not Historic
93	John Chaliff	Abandoned by government in 1999, since purchased by private developer, not yet +50
94	John Chaliff	Abandoned by government in 1999, since purchased by private developer, not yet +50
95		Old Raben's Tavern: Brothers Christian and Rudolph Rabens opened the tavern in 1898. They ran it until Prohibition, when they leased the building to a local butcher. Christian Rabens' son, Harry, reopened the bar after Prohibition at King and Meeting streets. By 1934 the tavern was back in its original spot. Chris Rabens III took over the business in 1967 and ran it for about a decade before selling it.

	AF	AG	AH	AI
75		Sarah Vonesh, Cashmere Fons	5/15/2009	
76		Sarah Vonesh, Cashmere Fons	5/13/2009	
77		Sarah Vonesh, Cashmere Fons	5/13/2009	
78	<a href="http://www.postandcourier.com/news/2008/july24/downtowncondoplanunveiled48509">www.postandcourier.com/news/2008/july24/downtowncondoplanunveiled48509</a> (dated july 24,2008)	Barry Stiefel and Meagan Baco	5/14/2009	
79	Field Survey	Barry Stiefel and Meagan Baco	5/14/2009	
80	Field Survey	Barry Stiefel and Meagan Baco	5/14/2009	
81	<a href="http://www.charlestoncounty.org">www.charlestoncounty.org</a>	Barry Stiefel and Meagan Baco	05/14/09	
82		Barry Stiefel and Meagan Baco	5/14/2009	
83		Sarah Vonesh, Cashmere Fons	5/15/2009	
84		Sarah Vonesh, Cashmere Fons	5/14/2009	
85	<a href="http://www.charlestoncounty.org">www.charlestoncounty.org</a>	Barry Stiefel and Meagan Baco	05/14/09	
86	Field Survey and "Buildings of Charleston", Poston 615	Barry Stiefel and Meagan Baco	5/14/2009	
87		Sarah Vonesh, Cashmere Fons	5/13/2009	
88	"Buildings of Charleston," Poston, page 611	Barry Stiefel and Meagan Baco	5/14/2009	
89	<a href="http://www.charlestoncounty.org">www.charlestoncounty.org</a> ; "Buildings of Charleston," Jonathan Poston, Page 612	Barry Stiefel and Meagan Baco	05/14/09	
90	<a href="http://www.charlestoncounty.org">www.charlestoncounty.org</a>	Barry Stiefel and Meagan Baco	05/14/09	
91	"Buildings of Charleston," Poston, page 610 and Citadel Square Baptist Church website @ <a href="http://www.citadelsquare.org">www.citadelsquare.org</a>	Barry Stiefel and Meagan Baco	5/14/2009	
92		Barry Stiefel and Meagan Baco	5/14/2009	
93	<a href="http://www.charlestoncounty.org">www.charlestoncounty.org</a>	Barry Stiefel and Meagan Baco	05/14/09	
94	Field Survey and Historic Charleston Foundation website @ <a href="http://www.historiccharleston.org/news_event/newsroom.html?id=66">http://www.historiccharleston.org/news_event/newsroom.html?id=66</a>	Barry Stiefel and Meagan Baco	05/14/09	
95	<a href="http://www.charlestoncounty.org">www.charlestoncounty.org</a> ; Post and Courier website: <a href="http://www.postandcourier.com/news/2007/may/16/new_restaurant_open_a_t_storied_location/?print">http://www.postandcourier.com/news/2007/may/16/new_restaurant_open_a_t_storied_location/?print</a>	Ken Sprague and Rachel Maher	05/13/09	

	A	B	C	D	E	F
96	4600404027	634 King Street	Spartan Quality Feeds	House: Golemis, George S	Charleston/Charleston	Shine
97	4600404028	640 King Street	House	House	Charleston/Charleston	Highway 26 Overpass
98	4600404031	654 A & B King Street	Charleston Garden Catalog Outlet		Charleston/Charleston	King and Shepard Street
99	4600404031	656 King Street	Metropolitan Furniture Company		Charleston/Charleston	Fishburn and King St
100	4600404031	652 King Street	Ferguson Fulghum		Charleston/Charleston	Sheppard and King St
101	4600404031	650 King Street	Charleston Gardens Home & Garden Collection		Charleston/Charleston	Sheppard and King st
102	4600404031	654 C King Street	Charleston Photography		Charleston/Charleston	King and Shepard Street
103	4600404074	677 King Street			Charleston/Charleston	King St and Sheppard St
104	4600404091	Sheppard and King	Vacant Lot	N/A	Charleston/Charleston	
105	4600404095	651 King St.	Vacant lot	N/A	Charleston/Charleston	
106	4600802002	584 King Street	U-Haul Self Storage	Dixie Home Stores, Inc.	Charleston/Charleston	Between Columbus and Spring Street
107	4600802006	134 Columbus Street	Post and Courier	The News and Courier	Charleston/Charleston	King and Line St
108	4600802011	633 King St	Prayer Room	2001 Hair's God Gift Beauty Salon	Charleston/Charleston	
109	4600802012	633 King St	Hope Assembly		Charleston/Charleston	
110	4600802013	631 King St, GIS 633			Charleston/Charleston	
111	4600802015	609 King St			Charleston/Charleston	Post & Courier and 134 Columbus
112	4600802016	605 King St			Charleston/Charleston	Rodger's Alley and Columbus St
113	4600802018	601 and 603 King St	Vacant Drive Thru		Charleston/Charleston	
114	4600802019	601 and 603 King St	Construction Site		Charleston/Charleston	
115	4600802130	131 Columbus Street			Charleston/Charleston	Columbus and King
116	4600804002	568 King Street	Vacant Building	Uptown Fresh Seafood	Charleston/Charleston	King and Spring Street
117	4600804048	544 King Street	Bank of America	Hackers Manufacturing Company	Charleston/Charleston	Cross Street: Cannon
118	4600804049	540 King Street	Site	Margaret Gidiere Building	Charleston/Charleston	Security Financial
119	4600804049	550 King Street	Site	Site	Charleston/Charleston	Cross Street: Cannon
120	4600804050	556 King Street	KHA	City Bank and Trust Company	Charleston/Charleston	558 King Street Site
121	4600804051	558 King Street	Site	South Carolina National Bank	Charleston/Charleston	Next to 560 King Street



	G	H	I	J	K	L	M	N	O
96	Private	Building	Muli Dwelling	Commercial	0	Contributes to Listed District	Within Old and Historic District of Charleston	c.1900	1
97	Private	Building	Single Dwelling	Vacant	1	Not Eligible	Within Old and Historic District of Charleston	c.1890-1920	1
98	Private	Building	Commercial	Commercial	0	Not Eligible		1940-present	0
99	Private	Building	Commercial	Commercial	0	Not Eligible		1940-present	0
100	Private	Building	Commercial	Commercial	0	Not Eligible		1940-present	0
101	Private	Building	Commercial	Commercial	0	Not Eligible			0
102	Private	Building	Commercial	Commercial	0	Not Eligible			0
103	Unknown/Other	Site		Vacant Lot	1	Not Eligible			0
104	Private	Site	N/A	Vacant lot	1	not eligible			0
105	Private	building	N/A	vacant lot	1	not eligible			0
106	Private	Building	Commercial	Commercial	0	Not Eligible	Within Old and Historic District of Charleston	c.1951	0
107	Private	Building	Commercial	Commercial	0	Potentially Eligible	Within Old and Historic District of Charleston	November 1951	0
108	Private	building	Commercial	Commercial	0	not eligible			0
109	Private	building	commercial	Church	0	not eligible			0
110	Private	building	commercial	Other	0	not eligible			0
111	Private	site	commercial	Parking Lot	0	Eligible			0
112	Private	building	commercial	Other	0	Potentially eligible			0
113	Unknown/other	site	other	other	0	not eligible			0
114	Private	site		Construction stie	1	not eligible			0
115	Unknown/Other	Building	Commercial	Vacant, commercial	1	Not Eligible			0
116	Private	Building	Mix Use	Vacant	1	Not Eligible	Within Old and Historic District of Charleston	c.1920-1940	0
117	Private	Building	Commercial	Vacant	1	Eligible, Contributes to Listed District	Within Old and Historic District of Charleston	c.1927	0
118	Private	Site	Commercial	Parking Lot	0	Not Eligible	Within Old and Historic District of Charleston		0
119	Private	Site	Commercial	Vacant Parking Lot	1	Not Eligible	Within Old and Historic District of Charleston		0
120	Private	Building	Mix Use	Commercial	0	Eligible	Within Old and Historic District of Charleston	c.1890	1
121	Private	Site	Commercial	Commercial	0	Not Eligible	Within Old and Historic District of Charleston		0

	P	Q	R	S	T	U	V	W	X	Y	Z
96		Retail	2	Brick	0	Rectangular	Brick, Concrete Block		Flat		
97			2	Frame	1	Rectangular	Beaded Weatherboard, Concrete Block	Turned Metal	Gable		Charleston Side Piazza
98			1	Steel	0	Rectangular	Stucco	Turned Metal	Flat		
99			1	Steel	0	Irregular	Stucco, Concrete Block	Turned Metal	Flat		
100			1 1/2	Frame	1	Rectangular	Stucco, Concrete Block	Turned Metal	Flat		
101			1	Frame	1	Irregular	Stucco, Brick, Concrete Block	Turned Metal	Flat		
102			1	Steel	0	Rectangular, Irregular	Stucco	Turned Metal			
103					0						
104					0						
105					0						
106		Retail	1	Masonry	0	Rectangular	Brick and Concrete Block		Flat		
107		Manufacture	4	Steel	0	Rectangular	Stucco, Faux Tabby, Stone Veneer, Concrete		Flat		Arched Colonnade
108			1 1/2	Masonry	0	Rectangle	Concrete block with gunite	asphalt shingle	front gabled	none	
109			2	Masonry	0	Rectangle	Brick Veneer		flat		
110			2 1/2	Masonry	0	Rectangle	Stucco		Flat		
111					0						
112			1 1/2	masonry	0	rectangle	Stucco		flat		
113					0						
114					0						
115			1 1/2	Frame	1	Rectangular	Stucco, Brick Veneer	Turned Metal	Flat		
116			2	Concrete Block	0	Rectangular	Brick Facade and Concrete Block	Shingle	Gable		
117		Banking	1	Brick	0	Rectangular	Brick w/Concrete Block Facade		Flat		
118					0	Rectangular					
119				Aluminum	0	Rectangular			Flat		
120		Service	2	Brick	0	Rectangular	Brick and Stucco		Flat		
121					0	Rectangular					

	AA	AB	AC
96	Slab	4300 sq ft, cornice, window pediments	638 King is a concrete block addition. First floor cantilevered roof.
97	Concrete Block	Charleston Single House, Piazza	Metal Stairway, Porch Enclosed with Concrete Block, Gutters
98	Concrete Block, Not Visible	Rectangular in plan, this contemporary building has flat, white stucco walls, and green awnings above front entrances	
99	Stuccoed Masonry, Concrete Block	This is a contemporary building, irregular in shape, with grey stucco and concrete block walls.	
100	Not Visible	Rectangular in plan, this contemporary building has green stucco walls with white pilasters, false white window surrounds, and a large cornice and lintel.	
101	Not Visible	A contemporary brick building covered in white stucco with a rectangular glass projection off of the front façade, covered by a green awning.	
102	Not Visible	Rectangular in plan, this building has flat, white stucco walls, and a red awning above the front entrance.	
103			
104			
105			
106	Slab	Cornice and U-Haul sign	Storefront glass replaced with sheet metal.
107	Slab	Bay doors for delivery, faux tabby arches, first floor horizontal windows emphasis, second floor thin long vertical window.	
108	not visible		
109	not visible	Commercial	
110	Slab Construction		
111			
112	Slab Construction	Art deco, stepped parapet, three bays	
113			
114			
115	Slab Construction	This industrial building is rectangular in plan, and made with concrete block, with a brick veneer on the front façade. There are also two large retractable metal doors on the front façade for truck access.	
116	Slab		Exterior stairs removed
117	Slab	Neo-classical architecture on the facade; Composite pilasters; scrolls; facade is angled towards lower King Street. Keystone scrolls, Greek revival door pediment with pateras, Federal windows.	Adjacent Drive-thru pavilion
118			
119		Drive-thru pavilion	
120	Slab	Detailed upper cornice and prism glass	Storefront remodeled
121			

	AD	AE
96		Late Victorian
97		Charleston single house
98		
99		
100		
101		
102		
103		
104		
105		
106		December 31, 1974 Southland Motors leased property to Piggly Wiggly for warehouse and processing facility.
107	Albert Simons & Samuel Lapham VI	The Charleston Courier founded in 1803. Charleston Daily News founded in 1865, merged to form the News & Courier in 1873. In 1991 merged with The Evening Post, founded in 1894, forming The Post & Courier.
108		
109		
110		
111		
112		
113		
114		
115		
116		Moderne
117	Albert Simons & Samuel Lapham VI	Classic Revival, S&L AIA 1927
118		540 King St was demolished. It was a three story brick building with original hip roofline with Flemish bond masonry. Characteristics suggest construction date was between 1810 and 1817.
119		
120		Late Victorian
121		In 1973 there was a Greek Revival Building on the site. 40 years before it was an antique dealer. August 1975 it was demolished to build a high rise but plans were canceled due to zoning restrictions. Originally constructed in c.1890, 3 stories, brick frame with a flat roof. Bricks were recovered from demo site to build garden at the intersection of East Bay and Broad St.

	AF	AG	AH	AI
96	<a href="http://www.charlestoncounty.org">www.charlestoncounty.org</a> ; <a href="http://www.battenandmoore.com/images/portfolio/634KingSt.pdf">http://www.battenandmoore.com/images/portfolio/634KingSt.pdf</a>	Ken Sprague and Rachel Maher	05/13/09	
97	<a href="http://www.charlestoncounty.org">www.charlestoncounty.org</a>	Ken Sprague and Rachel Maher	05/13/09	
98		Sarah Vonesh, Cashmere Fons	5/13/2009	
99		Sarah Vonesh, Cashmere Fons	5/13/2009	
100		Sarah Vonesh, Cashmere Fons	5/13/2009	
101		Sarah Vonesh, Cashmere Fons	5/13/2009	
102		Sarah Vonesh, Cashmere Fons	5/13/2009	
103		Sarah Vonesh, Cashmere Fons	5/13/2009	
104		Timnah Geller, Blair Harris	12-May-09	
105		Timnah Geller, Blair Harris	12-May-09	
106	<a href="http://www.charlestoncounty.org">www.charlestoncounty.org</a> : Charleston County Library vertical files Bldgs 586-88 King St	Ken Sprague and Rachel Maher	05/13/09	
107	<a href="http://www.charlestoncounty.org">www.charlestoncounty.org</a> ; <a href="http://www.postandcourier.com/about/evepost/">http://www.postandcourier.com/about/evepost/</a>	Ken Sprague and Rachel Maher	05/13/09	
108		Timnah Geller, Blair Harris	12-May-09	
109		Timnah Geller, Blair Harris	12-May-09	
110		Timnah Geller, Blair Harris	12-May-09	
111		Timnah Geller, Blair Harris	12-May-09	
112		Timnah Geller, Blair Harris	13-May-09	
113		Timnah Geller, Blair Harris	13-May-09	
114		Timnah Geller, Blair Harris	13-May-09	
115		Sarah Vonesh, Cashmere Fons	5/13/2009	
116	<a href="http://www.charlestoncounty.org">www.charlestoncounty.org</a>	Ken Sprague and Rachel Maher	05/13/09	
117	<a href="http://www.charlestoncounty.org">www.charlestoncounty.org</a> City of Charleston Upper King Street Information	Ken Sprague and Rachel Maher	05/13/09	
118	<a href="http://www.charlestoncounty.org">www.charlestoncounty.org</a> : The News and Courier Charleston County Library CVF – 540 King St.	Ken Sprague and Rachel Maher	05/13/09	
119	<a href="http://www.charlestoncounty.org">www.charlestoncounty.org</a>	Ken Sprague and Rachel Maher	05/13/09	
120	<a href="http://www.charlestoncounty.org">www.charlestoncounty.org</a>	Ken Sprague and Rachel Maher	05/13/09	
121	<a href="http://www.charlestoncounty.org">www.charlestoncounty.org</a> ; Charleston County Library CVF Buildings 558 King St	Ken Sprague and Rachel Maher	05/13/09	

	A	B	C	D	E	F
122	4600804052	560, 562 King Street	Vacant Building	Park Furniture	Charleston/Charleston	560 and 562 on same parcel
123	4600804053	564, 566 King Street	Parking Lot		Charleston/Charleston	Parking Lot between 562 and 568 King Street
124	4600804054	593 King St	Read Brother Building	Read Brother Building	Charleston/Charleston	Corner of King and Spring St
125	4600804056	587 King Street	Read Brothers	Read Brothers	Charleston/Charleston	
126	4600804056	587 King Street			Charleston/Charleston	
127	4600804057	587 King St	vacant lot with false façade		Charleston/Charleston	
128	4600804059	579 King Street	Hines Architectural Art Glass	"Fashion"	Charleston/Charleston	
129	4600804059	577 King Street			Charleston/Charleston	
130	4600804060	575 King Street	Altman's Furniture	Altman's Furniture	Charleston/Charleston	
131	4600804061	542 King Street	Security Finance	Margaret Gidiere Building	Charleston/Charleston	Cross Street: Cannon
132	4600804063	534, 536, 538 King Street	Reeve's Shoe Repair/ John Tucker Architect	The Mohrmann Grocery	Charleston/Charleston	Woolfe and King Street
133	4600804064	32 Woolfe Street	Meddin Bros.		Charleston/Charleston	Woolfe and King St
134	4600804065	585 King Street	Huger's Gullah Geechie Cuisine		Charleston/Charleston	
135	4601202002	33 Woolfe Street			Charleston/Charleston	Woolfe between King and Meeting
136	4601202003	35 Woolfe Street			Charleston/Charleston	Woolfe and King St
137	4601202007	532 King Street	Superbad	Basha & Bro.	Charleston/Charleston	Woolfe and King Street
138	4601202009	526, 528 King Street	Vacant Building	Soloman & Reznick	Charleston/Charleston	Next to Superbad
139	4601202010	522 King Street	Charleston Paint Company	Globe Furniture Company	Charleston/Charleston	Vacant Building
140	4601202011	516 King Street	George's Loan	Solomon's Bicycle Shop	Charleston/Charleston	Reid Street
141	4601202012	94 Reid St			Charleston/Charleston	Reid and King
142	4601202017	510 King Street	Morris Sokol Furniture	Morris Sokol Furniture	Charleston/Charleston	Reid Street
143	4601202018	502 King Street	California Closets	Jacobs Dry Goods Store	Charleston/Charleston	Reid and Mary Street
144	4601202019	498 King Street	Site	Globe Furniture Company	Charleston/Charleston	Morris and Mary Street
145	4601202020	494 King Street	Bluestein's Brothers Department Store	Bluestein's Brothers Department Store	Charleston/Charleston	Morris and Mary Street
146	4601202020	90 Mary Street			Charleston/Charleston	Mary Street between King and Meeting streets
147	4601202023	32 Ann Street	Charleston School of Law		Charleston/Charleston	Ann Street between King and Meeting

	G	H	I	J	K	L	M	N	O
122	Private	Building	Commercial, Mix Use	Vacant, Mix Use	1	Potentially Eligible	Within Old and Historic District of Charleston	c.1860-1940	1
123	Private	Site	Commercial	Parking Lot	0	Not Eligible	Within Old and Historic District of Charleston		0
124	Private	building	commercial	commercial	0	Eligible	Local	1912	0
125	Private	Building	commercial	commercial	0	Eligible, Contributes to Eligible District			0
126	Private	Building	commercial	commercial	0	Eligible, Contributes to Eligible District			0
127	Private	site		vacant	1	not eligible			0
128	Private	Building	multi dwelling, commercial	commercial	0	Eligible, Contributes to Eligible District		1860-1900	1
129	Private	Building	single dwelling, commercial	vacant	1	Eligible, Contributes to Eligible District		1920-1940	0
130	Private	Building	commercial	commercial	0	Eligible		1940+	0
131	Private	Building	Commercial	Commercial	0	Eligible, Contributes to Listed District	Within Old and Historic District of Charleston	c.1803-1817	1
132	Private	Building	Commercial	Commercial	0	Not Eligible	Within Old and Historic District of Charleston	c.1920-1940	0
133	Private	Building	Commercial	vacant , commercial	1	Contributes to Old and Historic Local District			0
134	Private	Building	multi dwelling, commercial	Mix Use	0	Contributes to Eligible District		1900-1930	1
135	Private	Building	Single Dwelling	Single Dwelling	0	Contributes to Old and Historic Local District			0
136	Unknown/Other	Site		Parking Lot	0	Not Eligible			0
137	Private	Building	Commercial	Commercial	0	Not Eligible	Within Old and Historic District of Charleston	c.1920-1940	0
138	Private	Building	Commercial	Vacant	1	Potentially Eligible	Within Old and Historic District of Charleston	c.1900-1930	1
139	Private	Building	Commercial	Commercial	0	Eligible, Contributes to Listed District	Within Old and Historic District of Charleston	c.1914	0
140	Private	Building	Commercial	Commercial	0	Not Eligible	Within Old and Historic District of Charleston	c.1920-1940	0
141	Private	Building	Single Dwelling	Single Dwelling	0	Contributes to Old and Historic Local District		1852	1
142	Private	Building	Commercial	Commercial	0	Contributes to Listed District	Within Old and Historic District of Charleston	c.1920-1940	0
143	Private	Building	Commercial	Commercial	0	Eligible, Contributes to Listed District	Within Old and Historic District of Charleston	c.1860-1900	1
144	Private	Site	Commercial	Parking Lot	0	Not Eligible	Within Old and Historic District of Charleston		0
145	Private	Building	Commercial	Commercial	0	Eligible, Contributes to Listed District	Within Old and Historic District of Charleston	c.1913	0
146	Unknown/Other	Building	Other	Other	0	Contributes to Old and Historic Local District			0
147	State	Building	Other	Commercial	0	Contributes to Old and Historic Local District			0

	P	Q	R	S	T	U	V	W	X	Y	Z
122			1,3	Concrete Block	0	Rectangular	Concrete Block, Stucco	Unknown, Shingle	Flat, Hipped		
123					0	Rectangular					
124	1989		3	Masonry	0	rectangle	brick		flat		
125			2 1/2	Masonry	0	Rectangular	Weatherboard		Flat & gabled		
126			2 1/2	Masonry	0	Rectangular	Weatherboard, Brick	metal	gabled		
127					0						
128			3	Masonry	0	Rectangular	Weatherboard, concrete veneer		Flat & gabled		
129			2	Masonry	0	Rectangular	Asbestos shingle		Flat		
130			2 1/2	Steel	0	Rectangular	Stucco, Brick Veneer		Flat		
131			3	Brick	0	Rectangular	Brick w/Concrete Block Facade	Asphalt	Hipped		
132		Service	2	Concrete Block	0	Rectangular	Brick Veneer		Flat		
133			2	Brick Masonry	0	Rectangular	Brick	Unknown	Flat		
134			2	Masonry	0	Rectangular	Weatherboard		Flat		
135			2	Frame	1	Rectangular	Asphalt Roll	Asphalt Shingles	Side Gabled		Rectangular
136					0						
137		Retail	2	Concrete Block	0	Rectangular	Concrete Block, Stucco		Flat		
138			2	Masonry	0	Rectangular	Brick		Flat		
139		Retail	2	Masonry	0	Rectangular	Stucco		Flat		
140		Retail	2	Masonry	0	Rectangular	Brick Veneer and Stucco		Flat		
141			2	Frame	1	Rectangular	Weatherboard	Red Turned Metal	Front Gabled		Rectangular
142		Retail	3	Masonry	0	Rectangular	Brick Veneer		Flat		
143		Retail	3	Frame	1	Rectangular	Beaded Weatherboard		Flat		
144					0	Rectangular			Flat		
145	c.1987	Retail	3	Masonry	0	Rectangular	Brick, Stucco		Flat		
146			2	Frame	1	Rectangular	Stucco	Unknown	Flat		
147			1.5	Frame	1	Rectangular	Stucco, Brick	Aluminum	Rounded		



	AA	AB	AC
122	Slab	560: Marque	
123			
124	Slab Construction	arched storefront windows, detailed brick work, commercial	
125	Slab Construction		
126	Slab Construction	none	
127			
128	Slab Construction	Historic commercial cornice, parapet, historic storefront, late Victorian,	
129	Slab Construction	Window pediments, parapet and cornice details, historic storefront, late Victorian	
130	Slab Construction	Moderne, Art Deco	
131	Slab	Pressed tin pediments; shutter brackets, English Bond with decorative scores	Windows and Doors boarded up on side of building
132	Slab	Large glass window panes on the first floor	
133	Not Visible	A painted brick industrial building with a flat roof; roman arch windows, and brick modillions.	
134	Slab Construction	Classic Revival, historic storefront, cornice	
135	Stuccoed Masonry	A Charleston single house with asphalt roll siding, a front gabled roof, and 6x6 double hung sash windows.	
136			
137	Slab	Red Awning, iron bars over storefront windows, 2nd floor windows are boarded up and have iron bars over them.	Red Canvas Awning
138	Slab	Large central window, simple brick dentils and cornice.	Boarded storefront and signs
139	Slab	Decorated window pediments; decorated bracket.	Red Canvas Awning
140	Slab		Iron bars on storefront windows and doors
141	Stuccoed Masonry	A white Charleston single house with beveled board wood siding, a front gabled roof, and 6x6 double hung sash windows.	
142	Slab	Modern facade; colorful and alternating brick pattern.	Brick veneer on north building, expanded storefront windows.
143	Slab	Decorated dormers, ornate upper cornice with brackets, medallions, dentils, pilasters. "Jacobs" on facade.	Staircase, storefront and signage
144	Slab		
145	Slab	Glazed blue brick, decorated arched dormers, ornate upper cornice with orbs.	Combined with adjacent storefront
146	Stuccoed Masonry	This late Victorian building has white stucco walls, a large cornice, double hung sash windows, and door and window pediments.	
147	Not Visible	This Early Victorian building is made of brick, and is partially covered in stucco. It has rounded arch doors, 6x6 double hung sash windows as well as a large oculus above the main entrance, and large overhanging eaves with a decorative cornice.	

	AD	AE
122		560: Moderne 562: Late Victorian
123		
124		
125		
126		
127		
128		
129		
130		
131		
132		Moderne
133		
134		
135		
136		
137		Moderne
138		Commercial
139		Late Victorian
140		Moderne
141		
142		Moderne
143		Late Victorian: Jacobs Dry Goods Store 1874-1894
144		c.1850 Charleston Single House 3 stories, wood frame, 2 story porches. Was demolished due to Bluestein Fire.
145		Classical Revival: After a fire in 1987 threatened the heritage of Blusteins the City Counsel stepped in and granted the business \$50,000 to reconstruct. This was merged 494 and 496 King Street to make Blusteins what it is today.
146		
147		Originally called the Charleston Freight Station, this building was a part of the railroad complex built by the Camden line of the South Carolina Railroad in the mid-nineteenth century. (Poston pg. 405)

	AF	AG	AH	AI
122	<a href="http://www.charlestoncounty.org">www.charlestoncounty.org</a> ; Charleston County Library CVF Buildings 460 King Street	Ken Sprague and Rachel Maher	05/13/09	
123	<a href="http://www.charlestoncounty.org">www.charlestoncounty.org</a>	Ken Sprague and Rachel Maher	05/13/09	
124		Timnah Geller, Blair Harris	13-May-09	
125		Timnah Geller, Blair Harris		
126		Timnah Geller, Blair Harris		
127		Timnah Geller, Blair Harris	13-May-09	
128		Timnah Geller, Blair Harris		
129		Timnah Geller, Blair Harris		
130		Timnah Geller, Blair Harris		
131	<a href="http://www.charlestoncounty.org">www.charlestoncounty.org</a> ; Dates back to Early 1800's "542 King Street is a Hidden Treasure" News and Courier August 22 1977 CVF Bldg-542 King St	Ken Sprague and Rachel Maher	05/13/09	
132	<a href="http://www.charlestoncounty.org">www.charlestoncounty.org</a>	Ken Sprague and Rachel Maher	05/13/09	
133		Sarah Vonesh, Cashmere Fons	5/13/2009	
134		Timnah Geller, Blair Harris		
135		Sarah Vonesh, Cashmere Fons	5/13/2009	
136		Sarah Vonesh, Cashmere Fons	5/13/2009	
137	<a href="http://www.charlestoncounty.org">www.charlestoncounty.org</a>	Ken Sprague and Rachel Maher	05/13/09	
138	<a href="http://www.charlestoncounty.org">www.charlestoncounty.org</a>	Ken Sprague and Rachel Maher	05/14/09	
139	<a href="http://www.charlestoncounty.org">www.charlestoncounty.org</a> ; Charleston County Library CVF Bldgs 522 King St.	Ken Sprague and Rachel Maher	05/14/09	
140	<a href="http://www.charlestoncounty.org">www.charlestoncounty.org</a>	Ken Sprague and Rachel Maher	05/14/09	
141		Sarah Vonesh, Cashmere Fons	5/13/2009	
142	<a href="http://www.charlestoncounty.org">www.charlestoncounty.org</a>	Ken Sprague and Rachel Maher	05/14/09	
143	<a href="http://www.charlestoncounty.org">www.charlestoncounty.org</a>	Ken Sprague and Rachel Maher	05/14/09	
144	<a href="http://www.charlestoncounty.org">www.charlestoncounty.org</a> ; Charleston County Library CVF Bldgs 498-500 King St. news and Courier June 6, 1976	Ken Sprague and Rachel Maher	05/14/09	
145	<a href="http://www.charlestoncounty.org">www.charlestoncounty.org</a> ; Charleston County Library CVF Bldgs 494 King Street.	Ken Sprague and Rachel Maher	05/14/09	
146		Sarah Vonesh, Cashmere Fons	5/13/2009	
147	Poston, Jonathan H.. <i>The Buildings of Charleston: A Guide to the City's Architecture</i> . University of South Carolina Press, 1997.	Sarah Vonesh, Cashmere Fons	5/13/2009	

	A	B	C	D	E	F
148	4601202025	492 King Street	Vacant Building	Leon's Mens and Boys Wear	Charleston/Charleston	Mary Street
149	4601202026	484 King Street	Mescon's	Zalking Koshers Meat Market	Charleston/Charleston	Mary Street
150	4601202027	482 King Street	Butterfly	Sunshine Shoe Store	Charleston/Charleston	Between Mary and Anne Street
151	4601202028	480 King Street	Reuben's	HF Weber	Charleston/Charleston	Between Mary and Anne Street
152	4601202029	478 King Street	Silver Dollar	House: Schneider, A	Charleston/Charleston	Between Mary and Anne Street
153	4601202030	476 King Street	Parlor	I. D. Solomon, Pawn Broker & Bicycle Shop	Charleston/Charleston	Between Mary and Anne Street
154	4601202031	468 King Street	Charleston's Beer Works	House: Mitchell, Moses	Charleston/Charleston	Between Mary and Anne Street
155	4601202032	466 King Street	Vacant Building	Abraham's Mens Shop	Charleston/Charleston	Between Mary and Anne Street
156	4601202033	464 King Street	Chai's Lounge and Tapas	Puckhaber Brothers Bakery	Charleston/Charleston	Between Mary and Anne Street
157	4601202034	460 King Street	Basil's	Robinson's Bicycle Shop	Charleston/Charleston	Anne Street, Visitors Center, Railroad
158	4601202034	42 Ann Street	Dudleys		Charleston/Charleston	Ann Street between King and Meeting
159	4601202070	571 King St	King Street Market		Charleston/Charleston	
160	4601202070	569 King St	Hot Spot (Records, tapes, CDs)	Hot Spot	Charleston/Charleston	
161	4601202071	567 King St	Regional Finance Corp.	C.G. Michaelis	Charleston/Charleston	
162	4601202072	565 King St	Taylor Pawn Shop	Taylor Pawn Shop	Charleston/Charleston	
163	4601202073	563 King St	Trusted Palate	2001- Good Will	Charleston/Charleston	
164	4601202074	557 King St, GIS 557-559	Uptown Styles (future site of Charleston Power Yoga)	SVK & Lena Kennison "Candy"	Charleston/Charleston	
165	4601202075	555 King St	Peking Gourmet		Charleston/Charleston	
166	4601202076	549 King St	O'Malleys		Charleston/Charleston	
167	4601202087	495 King St	King Street Antique Mall	Leon's	Charleston/Charleston	
168	4601202089	489 King St	Haute Design		Charleston/Charleston	
169	4601202090	487 King St			Charleston/Charleston	William Aiken House at 456 King
170	4601202092	481 King St			Charleston/Charleston	
171	4601202096	82 Mary Street	Hughes Lumber and Building Supplies		Charleston/Charleston	Mary Street between King and Meeting streets

	G	H	I	J	K	L	M	N	O
148	Private	Building	Commercial	Commercial	0	Contributes to Listed District, Potentially Eligible	Within Old and Historic District of Charleston	c.1860-1900	1
149	Private	Building	Commercial	Commercial	0	Contributes to Listed District, Potentially Eligible	Within Old and Historic District of Charleston	c.1920-1940	0
150	Private	Building	Commercial	Commercial	0	Contributes to Listed District, Potentially Eligible	Within Old and Historic District of Charleston	c.1920-1940	0
151	Private	Building	Mix Use	Mix Use	0	Eligible, Contributes to Listed District	Within Old and Historic District of Charleston	c.1860-1900	1
152	Private	Building	Mix Use	Commercial	0	Eligible, Contributes to Listed District	Within Old and Historic District of Charleston	c.1852	1
153	Private	Building	Commercial	Commercial	0	Eligible, Contributes to Listed District	Within Old and Historic District of Charleston	c.1900-1930	1
154	Private	Building	Commercial	Commercial	0	Not Eligible	Within Old and Historic District of Charleston	c.1900-1930	1
155	Private	Building	Mix Use	Vacant	1	Potentially Eligible	Within Old and Historic District of Charleston	c.1860-1900	1
156	Private	Building	Residential	Commercial	0	Not Eligible	Within Old and Historic District of Charleston	c.1884-1894	1
157	Private	Building	Commercial	Commercial	0	Potentially Eligible	Within Old and Historic District of Charleston	c.1900-1930	1
158	Unknown/Other	Building	Commercial	Commercial	0	Contributes to Old and Historic Local District			0
159	Private	building	single dwelling, commercial	Mix Use	0	Potentially eligible	Local		0
160	Private	building	single dwelling, commercial	Mix Use	0	Eligible	Local		0
161	Private	building	single dwelling, commercial	Mix Use	0	Eligible	Local	1860-1900	1
162	Private	building	single dwelling, commercial	Mix Use	0	Eligible	Local	1889	1
163	Private	building	multi dwelling, commercial	Mix Use	0	Eligible	Local	1820-1860	1
164	Private	building	single dwelling, commercial	Mix Use	0	Eligible			0
165	Private	building	Commercial	Mix Use	0	Eligible		1920-1940	0
166	Private	building	multi dwelling, commercial	Mix Use	0	Eligible		1900-1930	1
167	Private	building	Commercial	Mix Use	0	Potentially eligible	Local		0
168	Private	building	multi dwelling, commercial	Mix Use	0	Eligible	Local	1900-1930	1
169	Private	building	multi dwelling, commercial	Mix Use	0	Contributes to eligible district		2008	0
170	Private	building	single dwelling, commercial	Mix Use	0	Eligible		1860-1900	1
171	Private	Building	Commercial	Commercial	0	Contributes to Old and Historic Local District			0

	P	Q	R	S	T	U	V	W	X	Y	Z
148			3	Masonry	0	Rectangular	Brick, Stucco	Shingle	Gable		
149		Retail	2.5	Masonry	0	Rectangular	Brick, Synthetic Siding		Flat		
150			2	Masonry	0	Rectangular	Concrete Block		Flat		
151		Retail	2	Masonry	0	Rectangular	Beaded Weatherboard, Concrete Block, Stucco		Flat		
152	c.1800 & 2000	Restaurant	2	Frame	1	Rectangular	Beaded Weatherboard		Flat		Side Piazza
153		Retail	1	Masonry	0	Rectangular	Stucco		Flat		
154		Restaurant	1	Masonry	0	Rectangular	Brick, Stucco		Flat		
155	c.1952		3	Brick	0	Rectangular	Brick, Stucco		Flat		
156		Restaurant	2	Masonry	0	Rectangular	Beaded Weatherboard, Brick Veneer		Flat		
157		Restaurant	2	Masonry	0	Rectangular	Brick Veneer, Coquina, Stucco		Flat		
158			2	Frame	1	Rectangular	Concrete Block	Unknown	Flat		
159			2	Frame	1	rectangle	weatherboard, brick veneer	tin	front gabled		
160			2 1/2	Frame	1	rectangle	weatherboard, brick veneer, brick	tin	front gabled		
161			2 1/2	Masonry	0	rectangle	Stucco		flat		
162			2 1/2	Masonry	0	rectangle	brick, brick veneer		flat		
163			3	Frame	1	rectangle	stucco, brick		flat		
164			2	Brick	0	rectangle	brick, brick veneer		flat		
165			1 1/2	Brick	0	rectangle	brick, brick veneer		flat		
166			3	Brick	0	rectangle	stucco, brick		flat		
167			2 1/2	Masonry	0	rectangle	brick, stone veneer, panelled		flat		
168			3	Masonry	0	rectangle	stucco, brick		flat		
169			2 1/2	steel	0	rectangle	stucco, brick	metal	flat with porch	width of st frontage	angled
170	1950-1970		2	frame	1	rectangle	weatherboard, stucco	asphalt sheeting	gable		
171		hardware store	2	Frame	1	Irregular	Weatherboard	Tin	Flat and Gabled		

	AA	AB	AC
148	Slab	Gable Dormers, earthquake bolts	Boarded up
149	Slab	Vertical brick stacking, modern metal lettering	Boarded upper windows, black canvas awning
150	Slab	Diamond Concrete Block, Steel Beams, Central Window on 2 <sup>nd</sup> fl.	
151	Slab	Wood cornice and pediments, attached hyphen	Canvas awning
152	Slab	Window detailed in Italianate style, open side piazza, detailed cornice	Expanded storefront, paint
153	Slab	First floor hyphen, simple cornice, large transom window over door	
154	Slab		
155	Slab	Tin window pediments, remnants of overhang or marquee	
156	Slab		Brick veneer facade
157	Slab	Coquina and mid-century brick pattern	
158	Not Visible	This is a Moderne building made of concrete block, painted with a crème color.	
159	not visible	triparte window in gable and historic cornice, dormers	modern amenities, store front altered
160	not visible	historic storefront, dormers	modern amenities, store front altered
161	not visible	Parapet, ornate cornice, window pediments, single triangular one amongst three rounded, late victorian, italianate	
162	not visible	romanesque architecture on 1st floor, late victorian on 2nd, window pediments, parapet, ornate cornice, commercial storefront	
163	brick pier, brick pier with fill, brick	attached through allet way with wrought iron gate, historic windows, parapet, commercial	wood panelling on storefront, new awning
164	brick	victorian windows, historic storefront and cornice line	storefront, painted brick
165	not visible	glazed yellow brick, moderne	
166	not visible	parapet, quoins, double window pediments, historic storefront and cornice, classic revival	storefront
167	Slab Construction	mid-century façade, "Leon's" imprinted	façade veneer
168	concrete block	upper cornice, rounded window pediments, classic revival	modern repairs, cornice may have been re-made
169	Slab Construction	modern angled upper porch, exposed steel storefront, exaggerated central window	none, new construction
170	not visible	2/2 Victorian windows	enclosed piazza, aluminum storefront windows (c. 1950-1970)
171	Not Visible	This Charleston single house has 6x6 double hung sash windows, beveled board siding, and a side gabled, turned metal roof.	

	AD	AE
148		Late Victorian: Was George's loan in 1973 survey
149		Moderne
150		Moderne
151		Late Victorian
152		Late Victorian; Built in 1852 as a residential, was remodeled around 1880 to accommodate retail space.
153		Commercial: Most likely not part of adjacent building
154		Commercial
155		Late Victorian; "Took a beating from hurricane Hugo"
156		Commercial; Charleston Single House with piazza and commercial first floor.
157		Commercial
158		
159		
160		
161		
162		
163		
164		
165		
166		
167		
168		
169	Studio A Architecture, 418 King Street	
170		
171		



	AF	AG	AH	AI
148	<a href="http://www.charlestoncounty.org">www.charlestoncounty.org</a>	Ken Sprague and Rachel Maher	05/14/09	
149	<a href="http://www.charlestoncounty.org">www.charlestoncounty.org</a>	Ken Sprague and Rachel Maher	05/14/09	
150	<a href="http://www.charlestoncounty.org">www.charlestoncounty.org</a>	Ken Sprague and Rachel Maher	05/14/09	
151	<a href="http://www.charlestoncounty.org">www.charlestoncounty.org</a>	Ken Sprague and Rachel Maher	05/14/09	
152	<a href="http://www.charlestoncounty.org">www.charlestoncounty.org</a> ; Charleston County Library CVF Building-478, Post and Courier " Section 1 & 2DJanuary 16, 2000 "Homes	Ken Sprague and Rachel Maher	05/14/09	
153	<a href="http://www.charlestoncounty.org">www.charlestoncounty.org</a>	Ken Sprague and Rachel Maher	05/14/09	
154	<a href="http://www.charlestoncounty.org">www.charlestoncounty.org</a>	Ken Sprague and Rachel Maher	05/14/09	
155	<a href="http://www.charlestoncounty.org">www.charlestoncounty.org</a> ; Charleston County Library CVF Builds – 466 King Street , Post and Courier May 18, 2000 "Owner has hopes for 466 King"	Ken Sprague and Rachel Maher	05/14/09	
156	<a href="http://www.charlestoncounty.org">www.charlestoncounty.org</a> ; Charleston County Library CVF Builds – 464 King Street, News and Courier May 31, 1976 "464 King Has Problems"	Ken Sprague and Rachel Maher	05/14/09	
157	<a href="http://www.charlestoncounty.org">www.charlestoncounty.org</a> ; Charleston County Library CVF Builds – 460 King Street, Post and Courier May 5, 1995	Ken Sprague and Rachel Maher	05/14/09	
158		Sarah Vonesh, Cashmere Fons	5/14/2009	
159		Timnah Geller, Blair Harris	13-May-09	
160		Timnah Geller, Blair Harris	13-May-09	
161		Timnah Geller, Blair Harris	13-May-09	
162		Timnah Geller, Blair Harris	13-May-09	
163		Timnah Geller, Blair Harris	13-May-09	
164		Timnah Geller, Blair Harris	13-May-09	
165		Timnah Geller, Blair Harris	13-May-09	
166		Timnah Geller, Blair Harris	13-May-09	
167		Timnah Geller, Blair Harris	13-May-09	
168		Timnah Geller, Blair Harris	13-May-09	
169		Timnah Geller, Blair Harris	13-May-09	
170		Timnah Geller, Blair Harris	14-May-09	
171		Sarah Vonesh, Cashmere Fons	5/13/2009	

	A	B	C	D	E	F
172	4601202097	561 King St	Fifty-Two. Five	2001- Clothing Store	Charleston/Charleston	
173	4601202106	32 Ann Street	Music Farm	charleston freight station	Charleston/Charleston	Ann Street between King and Meeting
174	4601202108	474 King Street	Dwelling	Metropolitan Furniture Company	Charleston/Charleston	Between Mary and Anne Street
175	4601602001	375 Meeting St	Charleston Visitor Reception and Transportation Center		Charleston/Charleston	Wragg Square
176	4601602010	36 John Street	Childrens Museum	Camden Tower Courtyard/Camden Depot	Charleston/Charleston	John Street between King and Meeting
177	4601602012	46 John Street	46 John Street suites 200-300		Charleston/Charleston	John Street between King and Meeting
178	4601602014	39 John Street	Rue de Jean and Coast		Charleston/Charleston	John Street between King and Meeting
179	4601602015	37 John Street	Charleston Music Hall	The Tower Depot	Charleston/Charleston	John Street between King and Meeting
180	4601602017	345 Meeting St	Hampton Inn		Charleston/Charleston	Meeting St and John St
181	4601602019	409 King Street	Aimer Building		Charleston/Charleston	
182	4601602039	455 King st	Stuart Lawrence Salon	B. Mendalsonn	Charleston/Charleston	
183	4601602040	439 King St	Juanita Greenberg's		Charleston/Charleston	
184	4601602040	441 King St GIS 439	Las Olas		Charleston/Charleston	
185	4601602040	445 King St	Whitewash		Charleston/Charleston	
186	4601602041	431& 433 King Street	Cupcake, Planet Smoothie, Warren Dormitory		Charleston/Charleston	
187	4601602042	429 & 427 King Street	Bubba Slyes, The Dressing Room, Warren Dormitory		Charleston/Charleston	
188	4601602045	415 King Street	Allure Salon		Charleston/Charleston	
189	4601602047	412 King Street	Virginia's on King	Oppenheim Grocery	Charleston/Charleston	King and Hutson Streets
190	4601602048	414 King Street	Charleston Law School	Chase Furniture	Charleston/Charleston	Between John and Hutson
191	4601602049	416 King Street	Carolina Business Interior	House: Peschel, Otto	Charleston/Charleston	Between John and Hutson
192	4601602050	418 King Street	Carolina Business Interior	Liberty Furniture Company	Charleston/Charleston	Between John and Hutson
193	4601602051	420 King Street	Blue Bicycle / Salon Couture	National Music House	Charleston/Charleston	Between John and Hutson
194	4601602052	422 King Street	Vacant Lot		Charleston/Charleston	Between John and Hutson

	G	H	I	J	K	L	M	N	O
172	Private	building	Commercial	Mix Use	0	Eligible	Local	1920-1940	0
173	Unknown/Other	Building	Commercial	Commercial	0	Contributes to Old and Historic Local District			0
174	Private	Building	Mix Use	Commercial	0	Eligible, Contributes to Listed District	Within Old and Historic District of Charleston	c.1890	1
175	State	Building	Commercial	Commercial	0	Contributes to old and historic local district			0
176	Unknown/Other	Structure	Other	Commercial	0	Contributes to Old and Historic Local District		1850s	1
177	Unknown/Other	Building and lot	Commercial	Vacant, Commercial	1	Contributes to Old and Historic Local District			0
178	Private	Building	Unknown/Other	Commercial	0	Contributes to Listed District			0
179	Unknown/Other	Building	Unknown/Other	Other	0	Contributes to Listed District		1849-1850	0
180	Corporate	Building	Commercial	Commercial	0	Potentially Eligible			0
181	Private	Building	commercial	office	0	Eligible		1808	1
182	Private	building	single dwelling, commercial	Mix Use	0	Eligible			0
183	Private	building	single dwelling, commercial	Mix Use	0	Eligible		1860-1900	1
184	Private	building	single dwelling, commercial	Mix Use	0	Eligible		1860-1900	1
185	Private	building	Commercial	Mix Use	0	Eligible		c. 1930	0
186	State	Building		Mix Use	0	Not Eligible		Contemporary	0
187	State	Building		commercial	0	Not Eligible		Contemporary	0
188	Private	Building	single dwelling, commercial	Mix Use	0	Eligible			0
189	Private	Building	Commercial	Commercial	0	Eligible	Within Old and Historic District of Charleston	c.1915	0
190	State	Building	Commercial	School	0	Contributes to Listed District	Within Old and Historic District of Charleston	c.1803-1827	1
191	Private	Building	Mix Use	Commercial	0	Eligible, Contributes to Listed District	Within Old and Historic District of Charleston	c.1800-1850	1
192	Private	Building	Mix Use	Commercial	0	Eligible, Contributes to Listed District	Within Old and Historic District of Charleston	c.1800-1850	1
193	Private	Building	Commercial	Mix Use	0	Not Eligible	Within Old and Historic District of Charleston	c.1920-1940	0
194	Private	Site		Parking Lot	0	Not Eligible	Within Old and Historic District of Charleston		0

	P	Q	R	S	T	U	V	W	X	Y	Z
172			1	Brick	0	rectangle	brick, brick veneer		flat		
173			1.5	Steel	0	Rectangular	Stucco	Aluminum	Rounded		
174		Retail	2	Masonry	0	Rectangular	Brick, Scored Stucco		Flat		
175			1 1/2	Steel	0	Rectangular	Brick Veneer	Red Turned Metal	Side Gabled		
176	1910	childrens museum	1.5	Frame	1	Irregular	Stucco, Brick	Unknown	Flat		
177			1	Frame	1	Rectangular	Stucco	Unknown	Flat		
178			2	Frame	1	Rectangular	Stucco, Brick		Gabled		
179	1886, 1995		2	Frame	1	Rectangular	Stucco	Unknown	Flat		
180		Hotel	5	Frame	1	Rectangular	Stucco	Red Turned Metal	Front Gabled		
181			4	Masonry	0	Rectangular	Stucco	metal	gabled		
182			2	frame	1	rectangle	weatherboard		flat		
183			2	Brick Masonry	0	rectangle	brick veneer, painted brick		flat		
184			2	Frame	1	rectangle	weatherboard		flat		
185			3	brick	0	rectangle	stone veneer		flat		
186			5	Steel	0	Rectangular	Stucco, Brick		Flat		
187			3 1/2	Steel	0	Rectangular	Stucco		Flat		
188			2	Masonry	0	Rectangular	Scored Stucco		Flat		
189		Restaurant	1	Masonry	0	Rectangular	Stucco		Flat		
190	c.1947	School	2	Concrete Block	0	Rectangular	Brick, Marble		Flat		
191		Service	3	Masonry	0	Rectangular	Brick, Stucco	Slate	Hipped		
192		Service	3	Masonry	0	Rectangular	Brick, Stucco	Slate	Hipped		
193		Retail	2	Masonry	0	Rectangular	Brick		Flat		
194		Parking Lot			0	Rectangular					

	AA	AB	AC
172	brick	moderne	awning, storefront
173	Not Visible	This Early Victorian building is made of brick, and is partially covered in stucco. It has rounded arch doors, 6x6 double hung sash windows as well as a large oculus above the main entrance, and large overhanging eaves with a decorative cornice.	
174	Slab	Highly decorative Italianate cornice, Gothic dentils.	Iron stairway on side of building
175	Not Visible	This building, rectangular in plan, has a brick veneer, a red, turned metal side gabled roof, and rounded arch doorways	
176	Brick	Crenellations	Brick and metal buildings built in 1910
177	Not Visible	contemporary building composed of concrete block covered in white stucco	
178	Not Visible	Once an old warehouse building for the local railroad. The building was converted into two restaurants and given a new façade. The façade is covered with yellow stucco in the front and brick in the back and has a large gable facing John Street	
179	Not Visible	Gothic revival style building with crenellations, pointed arch doors and windows and attached buttresses on the front façade	1886 earthquake 1995 Converted in to Charleston Music Hall
180	Not Visible	This building, rectangular in plan, has full height pilasters, 6x6 double hung sash windows, and a front gabled roof.	
181	brick	earthquake bolts, iron balcony, multitude of window openings in façade	
182	Slab Construction	window pediments, cornice	storefront
183	Slab Construction	cornice, late victorian	
184	Slab Construction	detailed cornice with brackets, 2/2 Victorian windows, late victorian, italianate	
185	not visible	cast decorative elements, terra cotta, art deco	
186	Slab Construction	Post Modern	
187	Slab Construction	not historic	
188	Slab Construction	window pediments, earthquake bolts, brick chimney	
189	Slab	Molded stucco arch	Awnings
190	Slab	2 round opaque windows on second story	
191	Brick	Glass atrium attached to 418 King Street	Awning, Glass atrium
192	Brick	Glass atrium attached to 416 King Street	Awning, Glass atrium
193	Slab		
194			

	AD	AE
172		
173		Originally called the Charleston Freight Station, this building was a part of the railroad complex built by the Camden line of the South Carolina Railroad in the mid-nineteenth century. (Poston pg. 405)
174		Late Victorian; 1973 it was Uptown Center and Metropolitan Furniture Company
175		
176		old train depot
177		
178		old warehouse building for local railroad
179	Edward C. Jones	"37 John Street was originally named The Tower Depot, designed by Charleston architect Edward C. Jones and built between 1849 and 1850. The Gothic Revival style building originally had a three-story tower, which projected into John Street and served as the main entrance for a passenger depot for the South Carolina Railroad. Sadly, the original tower was destroyed in the earthquake of 1886 and subsequently, The Tower Depot became part of the Charleston Bagging & Manufacturing Company plant and was used as a warehouse for many years. Finally, the Bennett Hofford Company facilitated its' amazing transformation into the Charleston Music Hall in 1995." (www.charlestonmusichall.com)
180		
181		
182		
183		
184		
185		
186		
187		
188		
189		Moderne
190	Augustus Constantine (1947)	
191		Regency
192		Regency
193		Moderne
194		

	AF	AG	AH	AI
172		Timnah Geller, Blair Harris	13-May-09	
173	Poston, Jonathan H.. <i>The Buildings of Charleston: A Guide to the City's Architecture</i> . University of South Carolina Press, 1997.	Sarah Vonesh, Cashmere Fons	5/14/2009	
174	<a href="http://www.charlestoncounty.org">www.charlestoncounty.org</a> : Charleston County Library CVF Buildings 474 and 476 King Street	Ken Sprague and Rachel Maher	05/14/09	
175		Sarah Vonesh, Cashmere Fons	5/15/2009	
176	Sign at building	Sarah Vonesh, Cashmere Fons	5/14/2009	
177		Sarah Vonesh, Cashmere Fons	5/14/2009	
178		Sarah Vonesh, Cashmere Fons	5/14/2009	
179	<a href="http://www.CharlestonMusicHall.com/venu.html">www.CharlestonMusicHall.com/venu.html</a>	Sarah Vonesh, Cashmere Fons	5/14/2009	
180		Sarah Vonesh, Cashmere Fons	5/15/2009	
181		Timnah Geller, Blair Harris		
182		Timnah Geller, Blair Harris	14-May-09	
183		Timnah Geller, Blair Harris	14-May-09	
184		Timnah Geller, Blair Harris	14-May-09	
185		Timnah Geller, Blair Harris	14-May-09	
186		Timnah Geller, Blair Harris	5/14/2009	
187		Timnah Geller, Blair Harris	5/14/2009	
188		Timnah Geller, Blair Harris	5/14/2009	
189	<a href="http://www.charlestoncounty.org">www.charlestoncounty.org</a> : Charleston County Library CVF Bldgs 412 King Street.	Ken Sprague and Rachel Maher	05/14/09	
190	<a href="http://www.charlestoncounty.org">www.charlestoncounty.org</a> : Charleston County Library CVF Bldgs 414 King Street.	Ken Sprague and Rachel Maher	05/14/09	
191	<a href="http://www.charlestoncounty.org">www.charlestoncounty.org</a> : Charleston County Library CVF Bldgs 416 King Street.	Ken Sprague and Rachel Maher	05/14/09	
192	<a href="http://www.charlestoncounty.org">www.charlestoncounty.org</a> : Charleston County Library CVF Bldgs 418 King Street.	Ken Sprague and Rachel Maher	05/14/09	
193	<a href="http://www.charlestoncounty.org">www.charlestoncounty.org</a> : Charleston County Library CVF Bldgs 420 King Street.	Ken Sprague and Rachel Maher	05/14/09	
194	<a href="http://www.charlestoncounty.org">www.charlestoncounty.org</a> : Charleston County Library CVF Bldgs 422 King Street.	Ken Sprague and Rachel Maher	05/14/09	

	A	B	C	D	E	F
195	4601602053	424 King Street	Felice Designs	Hyphen	Charleston/Charleston	Between John and Hutson
196	4601602054	426 King Street	Circa Lighting	House, Marks, Francis	Charleston/Charleston	John Street
197	4601602054	41 John Street	Paolos		Charleston/Charleston	John Street between King and Meeting
198	4601602054	43, 43 1/2 John Street	Gallery Chuma		Charleston/Charleston	John Street between King and Meeting
199	4601602054	45 John Street			Charleston/Charleston	John Street between King and Meeting
200	4601602054	47 John Street	Filigree		Charleston/Charleston	John Street between King and Meeting
201	4601602054	49 John Street	Salon Solas		Charleston/Charleston	John Street between King and Meeting
202	4601602054	51 John Street	Patterson Smith Company, Inc.		Charleston/Charleston	John Street between King and Meeting
203	4601602055	428 King Street	Joe Pasta	Union Restaurant	Charleston/Charleston	John Street
204	4601602056	430 King Street	Three Dog Bakery	CM Limehouse	Charleston/Charleston	Between Anne and John Street
205	4601602057	432 King Street	La Fourchette	Berlinsky Bros	Charleston/Charleston	Between Anne and John Street
206	4601602058	434 King Street	Halls Chophouse	Lighting Showplace Harris Livingstain Co	Charleston/Charleston	Between Anne and John Street
207	4601602059	436 King Street	Canvas Design	House: Koffman	Charleston/Charleston	Between Anne and John Street
208	4601602060	440 & 442 King Street	Fish	House: Ferguson, James	Charleston/Charleston	Between Anne and John Street
209	4601602062	444 King Street	Siematic	JL Goldberg's	Charleston/Charleston	Between Anne and John Street
210	4601602063	446 King Street	American Theater	American Theater	Charleston/Charleston	Between Anne and John Street



	G	H	I	J	K	L	M	N	O
195	Private	Building	Other	Commercial	0	Not Eligible, Contributes to Listed District	Within Old and Historic District of Charleston	c.1920-1940	0
196	Private	Building	Mix Use	Commercial	0	Eligible, Contributes to Listed District	Within Old and Historic District of Charleston	c.1806-1810	1
197	Unknown/Other	Building	Unknown/Other	Commercial	0	Contributes to Listed District			0
198	Unknown/Other	Building	Commercial	Commercial	0	Contributes to Listed District			0
199	Unknown/Other	Building	Commercial	Commercial	0	Contributes to Listed District			0
200	Unknown/Other	Building	Commercial	Commercial	0	Contributes to Listed District			0
201	Unknown/Other	Building	Commercial	Commercial	0	Contributes to Listed District			0
202	Unknown/Other	Building	Commercial	Commercial	0	Contributes to Listed District			0
203	Private	Building	Commercial	Commercial	0	Not Eligible	Within Old and Historic District of Charleston	c.1900-1930	1
204	Private	Building	Commercial	Mix Use	0	Not Eligible	Within Old and Historic District of Charleston	c.1910	1
205	Private	Building	Commercial	Mix Use	0	Not Eligible	Within Old and Historic District of Charleston	c.1910	1
206	Private	Building	Commercial	Commercial	0	Not Eligible	Within Old and Historic District of Charleston	c.1900-1930	1
207	Private	Building	Mix Use	Commercial	0	Eligible, Contributes to Listed District	Within Old and Historic District of Charleston	c.1860-1900	1
208	Private	Building	Single Dwelling	Commercial	0	Eligible, Contributes to Listed District	Within Old and Historic District of Charleston	c.1830	1
209	Private	Building	Commercial	Commercial	0	Not Eligible	Within Old and Historic District of Charleston	c.1890	1
210	Private	Building	Commercial	Commercial	0	Potentially Eligible	Within Old and Historic District of Charleston	c.1942	0

	P	Q	R	S	T	U	V	W	X	Y	Z
195		Retail	1	Masonry	0	Rectangular	Stucco		Flat		
196	c.1942 & 1990-91	Retail	3	Masonry	0	Rectangular	Brick, Stucco	Turned Metal	Hipped		
197			2	Frame	1	Rectangular	Stucco	Tin	Hipped		
198			2	Frame	1	Rectangular	Stucco	Tin	Hipped		
199			2	Frame	1	Rectangular	Stucco	Tin	Hipped		
200		store	2	Frame	1	Rectangular	Stucco	Tin	Hipped		
201		salon	2	Frame	1	Rectangular	Stucco	Tin	Hipped		
202		office	2	Frame	1	Rectangular	Stucco	Tin	Hipped		
203		Restaurant	2	Masonry	0	Rectangular	Brick Veneer		Flat		
204		Retail	2	Masonry	0	Rectangular	Brick, Stucco		Flat		
205		Retail	2	Masonry	0	Rectangular	Brick, Stucco		Flat		
206		Restaurant	2	Masonry	0	Rectangular	Brick, Stucco		Flat		
207		Service	2	Masonry	0	Rectangular	Brick		Flat		
208	c.2000	Restaurant	2,3	Brick	0	Rectangular	Brick, Stucco, Wood Storefront	Turned Metal	Gable w/dormers		Charleston Piazza
209		Retail	3	Masonry	0	Rectangular	Stucco	Turned Metal	Gable		
210	c.1947 & 1996	Movie Theater	2	Masonry	0	L	Stucco		Flat		

	AA	AB	AC
195	Brick		Used to be a hyphen
196	Slab	Earthquake bolts	
197	Not Visible	located inside a Federal style building that has white stucco walls 6X6 double hung sash windows on the second floor, and a red, turned metal, hipped roof	
198	Not Visible	located in a Federal style building. The walls are plain white stucco, and there are 6x6 double hung sash windows on the second floor	
199	Not Visible	located in a Federal style building. The walls are plain white stucco, and there are 6x6 double hung sash windows on the second floor	
200	Not Visible	Located in a Federal style building, 51,49, and 47 John Street are composed of white stucco walls with 6X6 double hung sash windows on the second floor and awnings above the storefronts	
201	Not Visible	Located in a Federal style building, 51,49, and 47 John Street are composed of white stucco walls with 6X6 double hung sash windows on the second floor and awnings above the storefronts	
202	Not Visible	Located in a Federal style building, 51,49, and 47 John Street are composed of white stucco walls with 6X6 double hung sash windows on the second floor and awnings above the storefronts	
203	Slab		
204	Slab	2/2 Victorian windows	
205	Slab	2/2 Victorian windows	
206	Slab	Simple cornice	
207	Brick	Victorian cornice and pediments.	Victorian window above side door.
208	Brick		
209	Slab	Double faux dormers	
210	Slab	Detailed box office, neon marquee	

	AD	AE
195		Moderne
196		Regency
197		
198		
199		
200		
201		
202		
203		Commercial
204		Late Victorian
205		Late Victorian
206		Classical Revival
207		Late Victorian
208	Reggie Gibson (2000)	Charleston Single House with piazza.
209		Late Victorian, Fire in 1979 upholstery shop.
210	Augustus Constantine (1947)	<p>The American Theater opened in 1942 and was wildly popular through the 1960s. However, by 1977, the building stood vacant and abandoned, while the neighborhood around it declined. True to their preservationist vision, the Patricks recognized the Theater as an important community building opportunity and purchased it in 1997. After a painstaking renovation by Glenn Keyes Architects, The American reopened in 2003 as a state-of-the-art event and conference facility.</p> <p>The Art-Deco-inspired American Theater is revamping its second theater and concession area into an elegant ballroom, making it a space of grace and comfort, glamour and warmth for large-scale private parties and corporate events. Glenn Keyes Architects, who completed The William Aiken House renovation and Lowndes Grove, leads the project. Architectural details and décor will reflect the theater's stunning Art-Deco style. The front theater, currently used for both corporate and private meetings and movie screenings, as well as Star's Bar, will remain unchanged.</p>

	AF	AG	AH	AI
195	<a href="http://www.charlestoncounty.org">www.charlestoncounty.org</a> : Charleston County Library CVF Bldgs 424 King Street.	Ken Sprague and Rachel Maher	05/14/09	
196	<a href="http://www.charlestoncounty.org">www.charlestoncounty.org</a> : Charleston County Library CVF Bldgs 426 King Street.	Ken Sprague and Rachel Maher	05/14/09	
197		Sarah Vonesh, Cashmere Fons	5/14/2009	
198		Sarah Vonesh, Cashmere Fons	5/14/2009	
199		Sarah Vonesh, Cashmere Fons	5/14/2009	
200		Sarah Vonesh, Cashmere Fons	5/14/2009	
201		Sarah Vonesh, Cashmere Fons	5/14/2009	
202		Sarah Vonesh, Cashmere Fons	5/14/2009	
203	<a href="http://www.charlestoncounty.org">www.charlestoncounty.org</a> : Charleston County Library CVF Bldgs 428 King Street.	Ken Sprague and Rachel Maher	05/14/09	
204	<a href="http://www.charlestoncounty.org">www.charlestoncounty.org</a> : Charleston County Library CVF Bldgs 430 King Street.	Ken Sprague and Rachel Maher	05/14/09	
205	<a href="http://www.charlestoncounty.org">www.charlestoncounty.org</a> : Charleston County Library CVF Bldgs 432 King Street.	Ken Sprague and Rachel Maher	05/14/09	
206	<a href="http://www.charlestoncounty.org">www.charlestoncounty.org</a> : Charleston County Library CVF Bldgs 434 King Street.	Ken Sprague and Rachel Maher	05/14/09	
207	<a href="http://www.charlestoncounty.org">www.charlestoncounty.org</a> ; Charleston County Library CVF Bldgs 436 King St.	Ken Sprague and Rachel Maher	05/14/09	
208	<a href="http://www.charlestoncounty.org">www.charlestoncounty.org</a> ; Charleston County Library CVF Buildings 442 King Street, Post and Courier August 21, 2000 "Restoration restores abandoned building on upper King"	Ken Sprague and Rachel Maher	05/14/09	
209	<a href="http://www.charlestoncounty.org">www.charlestoncounty.org</a> ; Charleston County Library CVF Buildings 444 King Street	Ken Sprague and Rachel Maher	05/14/09	
210	<a href="http://www.charlestoncounty.org">www.charlestoncounty.org</a> , <a href="http://www.waymarking.com/waymarks/WM4P7N">http://www.waymarking.com/waymarks/WM4P7N</a>	Ken Sprague and Rachel Maher	05/14/09	

	A	B	C	D	E	F
211	4601602064	456 King Street	House: Aiken, William	House: Aiken, William	Charleston/Charleston	Anne Street, Visitors Center, Railroad
212	4601602066	438 King Street	Nancy Koltes	House: Livingstain, Harris	Charleston/Charleston	Between Anne and John Street
213	4601602072	14 Hutson Street			Charleston/Charleston	Marion Square
214	4601604002	405 King Street	St. Mathews Lutheran Church		Charleston/Charleston	
215	4601604003	403 King St	St. Matthew's Community Outreach Center		Charleston/Charleston	
216	4601604004	387 King St	Francis Marion Hotel	Francis Marion Hotel	Charleston/Charleston	
217	4601604006	337 Meeting Street	Embassy Suites	The Citadel	Charleston/Charleston	Meeting St and Marion Square
218	4601604008	401 King St	Smoking Lamp, Parking garage		Charleston/Charleston	
219	4601604009	404 King Street	Charleston County Library	Charleston County Library	Charleston/Charleston	Marion Square
220						







	AA	AB	AC
211	Brick		
212	Slab	Detailed upper cornice, window pediments, Victorian windows	Awning, storefront
213	Not Visible		
214	Slab Construction	Gothic Revival Style	
215	not visible	single dormer with Palladian window, 9/9 windows, brick cornice, gothic revival church	
216	slab construction, caissons	Classic revival, arched windows, Corinthian pilasters, terra cotta décor	
217	Not Visible	This building has pink stucco walls, crenellations, and rounded arch windows.	
218	not visible	scale and proportion of structure compliments that of historic mainstreet	
219	Slab		
220			

	AD	AE
211		<p>"This structure was purchased by William Aiken Sr. in 1811 from the trustees of the minor James Mackie for \$14,000. It was originally built as a brick single house with associated outbuildings located on the Ann Street side of the property. A ballroom addition was constructed sometime after Aiken's death in 1831, as was the Gothic Revival style carriage house at the rear. The property was extensively damaged in the 1886 earthquake." (Poston 389)</p>
212	Warren Stoppelbein	Late Victorian
213		
214		
215		
216		
217		
218		
219	Willard Hirsch	<p>The former Charleston County Library was the site of the old west wing of the Citadel. Its demolition was called for in 1958, and the County Library was then built.</p>
220		

	AF	AG	AH	AI
211	<a href="http://www.charlestoncounty.org">www.charlestoncounty.org</a> ; Charleston County Library CVF Buildings 456 King Street	Ken Sprague and Rachel Maher	05/14/09	
212	<a href="http://www.charlestoncounty.org">www.charlestoncounty.org</a> ; Charleston County Library CVF Buildings 438 King Street, The Evening Post August 20, 1990 "Gracious Style Marks Building"	Ken Sprague and Rachel Maher	05/14/09	
213		Sarah Vonesh, Cashmere Fons	5/14/2009	
214		Timnah Geller, Blair Harris		
215		Timnah Geller, Blair Harris	14-May-09	
216		Timnah Geller, Blair Harris	15-May-09	
217		Sarah Vonesh, Cashmere Fons	5/15/2009	
218		Timnah Geller, Blair Harris	15-May-09	
219	<a href="http://www.charlestoncounty.org">www.charlestoncounty.org</a> : Charleston County Library CVF Bldgs 404 King Street.	Ken Sprague and Rachel Maher	05/14/09	
220				